

SHELL.3



IP66	IK09	CREE XP-G	RECYCLE
FAILURE RATE < 0,1% after 25,000h	LIFE TIME Tested over 50,000h	MIN -20°C MAX 55°C	CLASE I
SP US	RoHS	CE	RoHS 2

CIRCULAR PROJECTORS
SHELL SERIES

References

Code	Type	Finish	Light Color	Power	Lense		Voltage	Driver	
VL-SH3	A Base	LG Light grey	White						
	B Base 2	DK Dark grey	W24 2400K	10W	1,5° (10W)	2,5°	UNIV 100-264Vac	STD ON/OFF	
	C Pole Arm	WH White	W27 2700K	12W	6°	12°	24 24Vdc	010 0-10V	
	D Pole mounted	BK Black	W30 3000K	15W	20°	30°		DALI	
	E Stripe mounted	RAL Any RAL color	W40 4000K	30W	40°	60°		CAS Casambi	
	F Nut		W60 6000K			5x20°	10x70°		
	Single Color (SC)								
	R Red			12W	6°	12°	UNIV 100-264Vac	STD ON/OFF	
	B Blue			15W	20°	30°	24 24Vdc	010 0-10V	
	G Green			30W	40°	60°		DALI	
	A Amber				5x20°	10x70°		CAS Casambi	
	RGBW								
RGBW3			12W	15°	20°	24 24Vdc	DALI		
4 in 1 Chip				30°	60°		DMX		
RGB+W3000K				15x60°			CAS Casambi		
RGBW4									
4 in 1 Chip									
RGB+W4000K									

Reference example

VL-SH3-A-WH-W24-10W-1,5°-UNIV-STD

Variations



A
Base



B
Base 2



C
Pole Arm
D=45mm



D
Pole mounted
D67-325mm

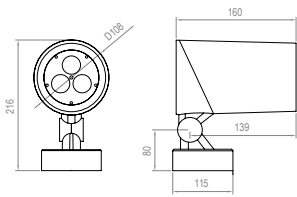


E
Stripe mounted

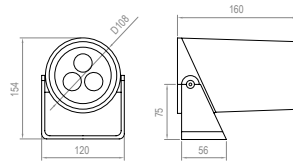


F
Nut (M10x1,5mm)

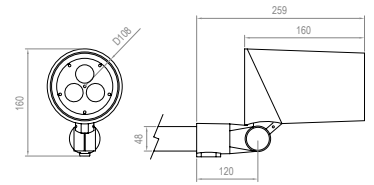
Dimensions



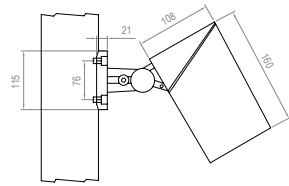
TYPE A



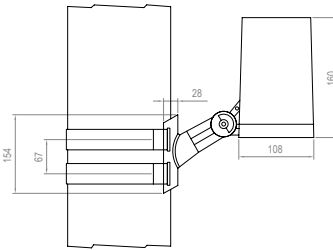
TYPE B



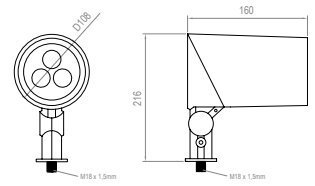
TYPE C



TYPE D



TYPE E



TYPE F

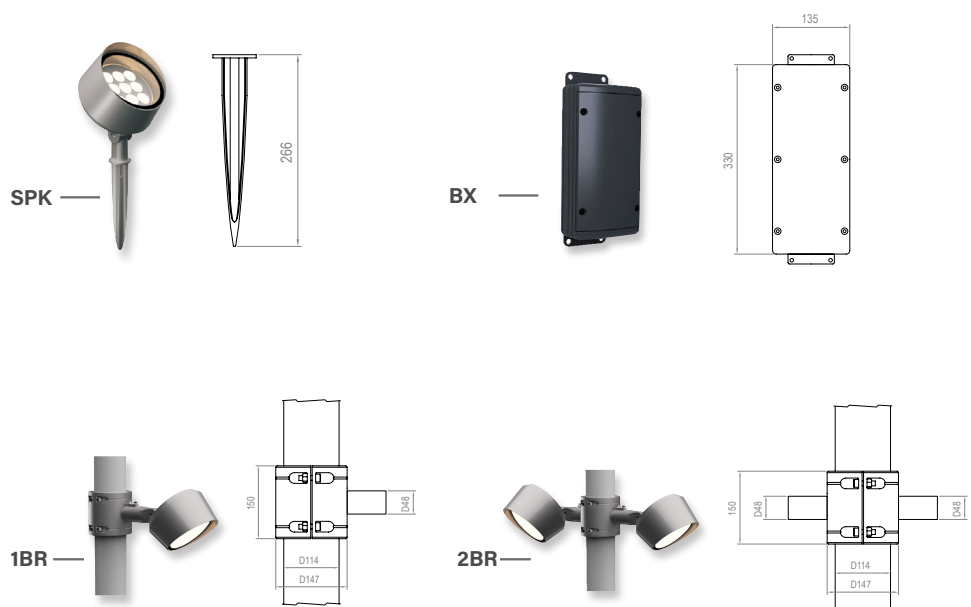
Accessories

Code	Accessories
VL-SH3	HC Honeycomb Grid MSH Mesh HO Hood VS Visor



Code	Accessories
VL-SH3	*SPK SPIKE *1BR Bracket for 1 projector *2BR Bracket for 2 projector *BX Elevated Box *CBLX Special length cable

** Must be used with Type F*
** Must be used with Type C*
** Must be used with Type C*
** Must be used with Type F*
** Instead of X, put length of cable needed*
Example: VL-SH3-CBL-10m



Accessories

Code	Description	Diameter	N° of projectors
VL-SH3	RNG RING	50 50cm	2P 2 projectors
		60 60cm	3P 3 projectors
		70 70cm	4P 4 projectors
		80 80cm	6P 6 projectors
			8P 8 projectors
		<i>Suggested diameter = diameter of tree trunk + 10cm/15cm</i>	<i>* projectors references must be order separately</i>
			<i>** For 24Vdc projectors, ring can allocate 1 power supply for all projectors</i>
			<i>*** Must be used with Type F</i>

