

SHELL.5



IP66	IK09	CREE XP-G	RECYCLE
FAILURE RATE < 0,1% after 25,000h	LIFE TIME Tested over 50,000h	MIN -20°C MAX 55°C	CLASE I
SP US	RoHS	CE	RoHS 2

**CIRCULAR PROJECTORS
SHELL SERIES**

References

Code	Type	Finish	Light Color	Power	Lense		Voltage	Driver	
VL-SH5	A Base	LG Light grey	White						
	B Base 2	DK Dark grey	W24 2400K	45W	2,5° (45W)	6°	UNIV 100-264Vac	STD ON/OFF	
	C Pole Arm	WH White	W27 2700K	50W	12°	20°	24 24Vdc	010 0-10V	
	D Pole mounted	BK Black	W30 3000K		30°	40°		DALI	
	E Stripe mounted	RAL Any RAL color	W40 4000K		60°	5x20°		CAS Casambi	
	F Nut		W60 6000K			10x70°			
	Single Color (SC)								
	R Red		45W	6°	12°	UNIV 100-264Vac		STD ON/OFF	
	B Blue		50W	20°	30°	24 24Vdc		010 0-10V	
	G Green			40°	60°			DALI	
	A Amber			5x20°	10x70°			CAS Casambi	
	RGBW								
	RGBW3		50W	15°	20°	UNIV 100-264Vac		DALI	
	4 in 1 Chip			30°	60°	24 24Vdc		DMX	
	RGB+W3000K			15x60°				CAS Casambi	
RGBW4									
4 in 1 Chip									
RGB+W4000K									

Reference example

VL-SH5-A-DK-W30-45W-2,5°-UNIV-DALI

Variations



A
Base



B
Base 2



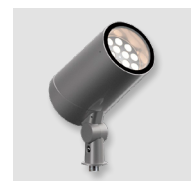
C
Pole Arm
D=45mm



D
Pole mounted
D67-325mm

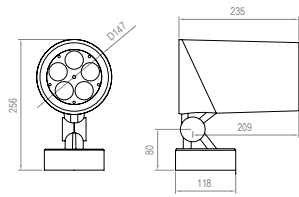


E
Stripe mounted

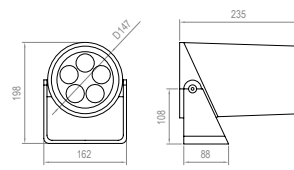


F
Nut (M10x1,5mm)

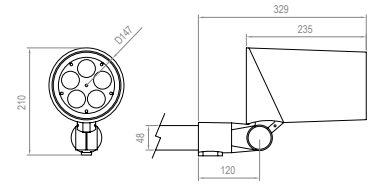
Dimensions



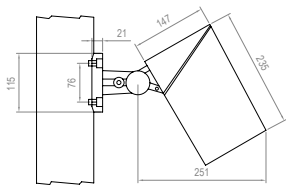
TYPE A



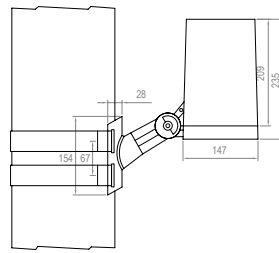
TYPE B



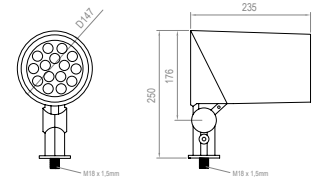
TYPE C



TYPE D



TYPE E



TYPE F

Accessories

Code	Accessories
VL-SH5	HC Honeycomb Grid MSH Mesh HO Hood VS Visor

Code	Accessories
VL-SH5	*SPK SPIKE *1BR Bracket for 1 projector *2BR Bracket for 2 projector *BX Elevated Box *CBLX Special length cable

** Must be used with Type F*
** Must be used with Type C*
** Must be used with Type C*
** Must be used with Type F*
** Instead of X, put length of cable needed*
Example: VL-SH5-CBL-10m

