

# SHELL.0



IP66	IK09	CREE XP-G	RECYCLE
FAILURE RATE < 0,1% after 25,000h	LIFE TIME Tested over 50,000h	MIN -20°C MAX 55°C	CLASE I
SP US	CE	RoHS	RoHS 2

CIRCULAR PROJECTORS  
**SHELL SERIES**

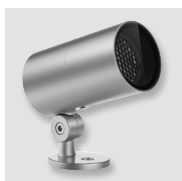
## References

Code	Type	Finish	Light Color	Power	Lense		Voltage	Driver		
<b>VL-SH0</b>	<b>A</b> Base <b>F</b> Nut	<b>LG</b> Light grey <b>DK</b> Dark grey <b>WH</b> White <b>BK</b> Black <b>RAL</b> Any RAL color	<b>White</b>							
			<b>W24</b> 2400K	<b>10W</b>	<b>2,5°</b>	<b>6°</b>	<b>UNIV</b> 100-264Vac	<b>STD</b> ON/OFF		
			<b>W27</b> 2700K		<b>12°</b>	<b>20°</b>				
			<b>W30</b> 3000K		<b>30°</b>	<b>40°</b>			<b>12</b> 12Vdc	<b>R010</b> Remote 0-10V
			<b>W40</b> 4000K		<b>60°</b>	<b>5x20°</b>		<b>RD</b> Remote DALI		
			<b>W60</b> 6000K		<b>10x70°</b>			<b>RCAS</b> Casambi		
			<b>Single Color (SC)</b>							
			<b>R</b> Red	<b>10W</b>	<b>6°</b>	<b>12°</b>	<b>UNIV</b> 100-264Vac	<b>STD</b> ON/OFF		
			<b>B</b> Blue		<b>20°</b>	<b>30°</b>				
			<b>G</b> Green		<b>40°</b>	<b>60°</b>			<b>12</b> 12Vdc	<b>R010</b> Remote 0-10V
			<b>A</b> Amber		<b>5x20°</b>	<b>10x70°</b>				<b>RD</b> Remote DALI
								<b>RCAS</b> Casambi		
			<b>RGBW</b>							
			<b>RGBW3</b>	<b>10W</b>	<b>15°</b>	<b>20°</b>	<b>12</b> 12Vdc	<b>RD</b> Remote DALI		
			4 in 1 Chip		<b>30°</b>	<b>60°</b>				
RGB+W3000K	<b>10x30°</b>	<b>10x60°</b>	<b>DMX</b>							
<b>RGBW4</b>					<b>RCAS</b> Casambi					
4 in 1 Chip										
RGB+W4000K										

Reference example

VL-SH0-A-WH-W24-10W-60°-UNIV-CAS

## Variations

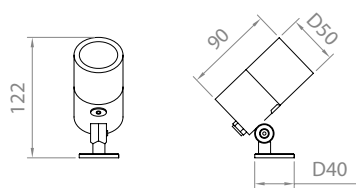


**A**  
Base

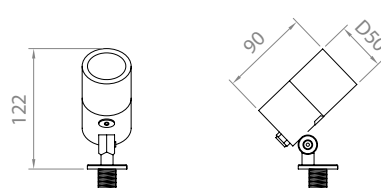


**F**  
Nut (M10x1,5mm)

## Dimensions





**TYPE A**



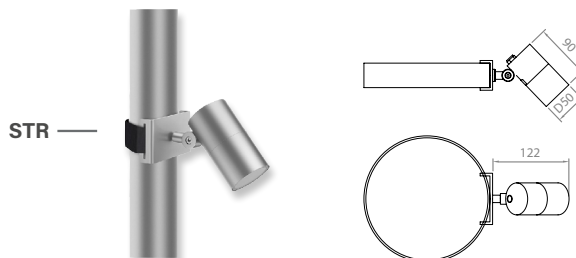
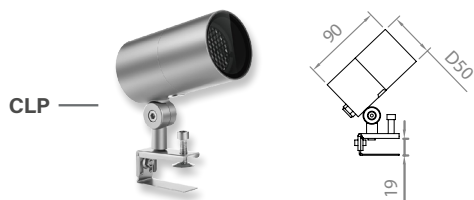
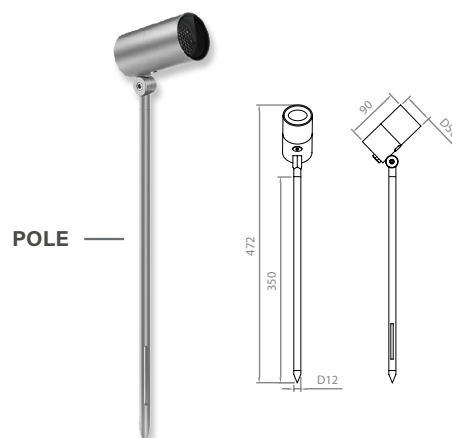
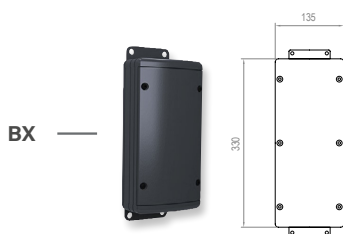
**TYPE F**

## Accessories

Code	Accessories
VL-SH0	<b>HC</b> Honeycomb Grid <b>HO</b> Hood 75 mm

Code	Accessories
VL-SH0	<b>*SPK SPIKE</b> <b>*BX</b> Elevated Box <b>*POLE</b> POLE <b>*CLP</b> CLAMP <b>*STR</b> STRIPE <b>*CBLX</b> Special length cable  <i>* Must be used with Type F</i> <i>* Must be used with Type F</i> <i>* Must be used with Type F</i> <i>* Must be used with Type F</i> <i>* Must be used with Type F</i>  <i>* Instead of X, put length of cable needed</i> <i>Example: VL-SH0-CBL-10m</i>



# Accessories

Code	Description	Diameter	N° of projectors
VL-SH0	RNG RING	50 50cm	2P 2 projectors
		60 60cm	3P 3 projectors
		70 70cm	4P 4 projectors
		80 80cm	6P 6 projectors
	<i>Suggested diameter = diameter of tree trunk + 10cm/15cm</i>		<i>* projectors references must be order separately</i>
			<i>** For 24Vdc projectors, ring can allocate 1 power supply for all projectors</i>

*\*\*\* Must be used with Type F*

