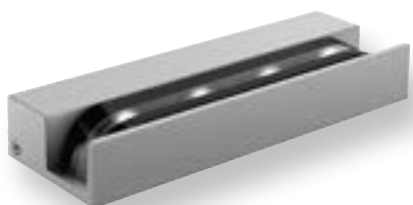




LUUBA



GLIDE



GLIDE.XL



WAYS



SHIFT.UD

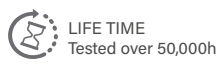
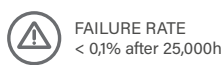
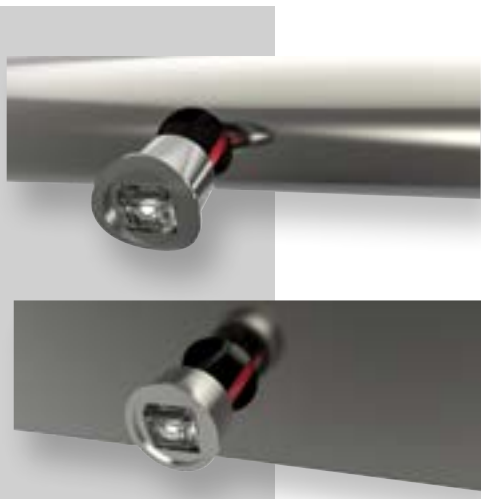


SHIFT.D



SHIFT.CL

LUUBA



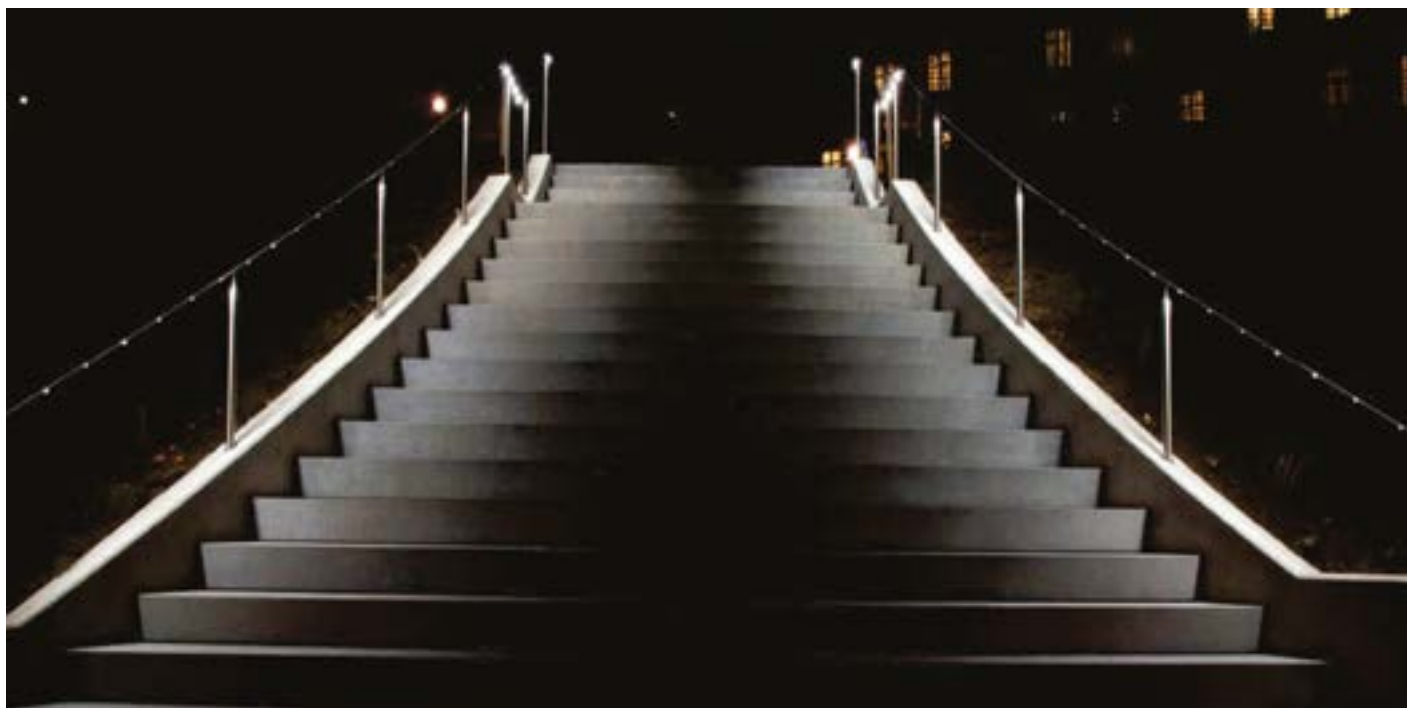
EFFECTS
EFFECTS SERIES

References

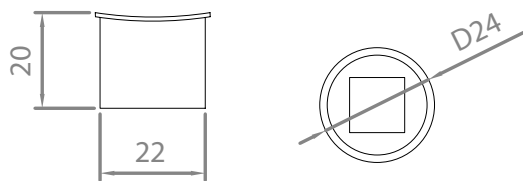
Code	Shape	Ligth Color	Lense	
VL-LUUBA	RD Round	W24 2400K	8°	15°
	FL Flat	W27 2700K	25°	30°
		W30 3000K	40°	50°
		W40 4000K	15x45°	45x15°
		W60 6000K	W	ASYM1
		R Red	ASYM2	
		B Blue		
		G Green		
		A Amber		

Reference example

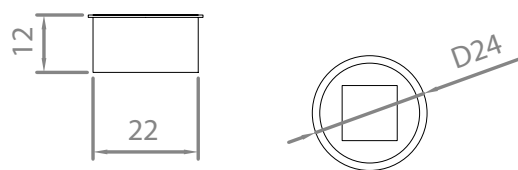
VL-LUUBA-RD-W24-ASYM2



Dimensions



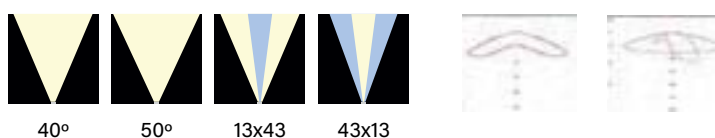
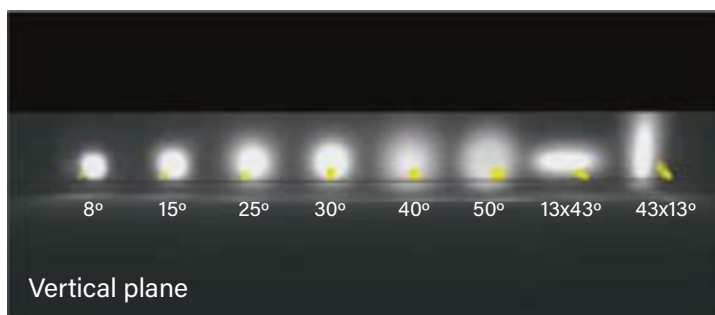
LUUBA ROUND



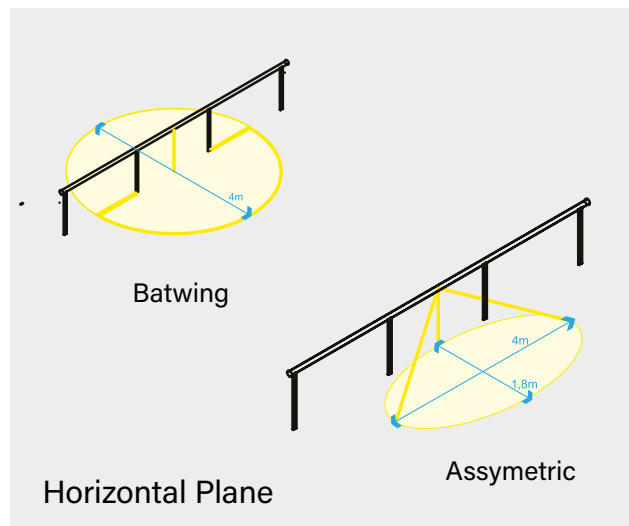
LUUBA FLAT

Optics

General lighting



Path lighting



Electrical

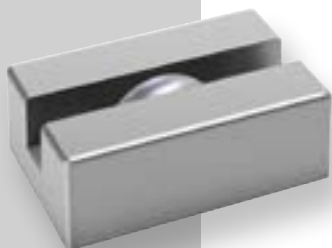
LUUBA works at constant current.
It admits current from 100mA to 900mA.
If outside temperature can reach more than 50°C,
current must not exceed 700mA.

Feeding current	Operating voltage	Power	Luminous flux
100mA	2,58 V	0,26 W	37lm
200mA	2,62 V	0,52 W	74lm
300mA	2,65 V	0,80 W	118lm
400mA	2,70 V	0,95 W	148lm
500mA	2,75 V	1,38 W	214lm
600mA	2,77 V	1,67 W	240lm
700mA	2,80 V	1,96 W	274lm
800mA	2,84 V	2,28 W	310lm
900mA	2,87 V	2,60 W	350lm

*Data referred to 4000K



GLIDE



IP67	IK10	CREE XP-G	RECYCLE
FAILURE RATE < 0,1% after 25,000h	LIFE TIME Tested over 50,000h	MIN -20°C MAX 55°C	CLASE I

EFFECTS
EFFECTS SERIES

References

Code	Light Color	Type-Power	Lense	Voltage	Driver
VL-GLIDE	White				
	W24 2400K	Type A - 3W	2x120°	UNIV 100-264Vac (Only for type A and B)	STD ON/OFF
	W27 2700K	Type B - 9W			010 0-10V
	W30 3000K	Type C - 20W			DALI
	W40 4000K				CAS Casambi
	W60 6000K				24 24Vdc
	Single Color (SC)				
	R Red	Type A - 3W	2x120°	UNIV 100-264Vac (Only for type A and B)	STD ON/OFF
	B Blue	Type B - 9W			010 0-10V
	G Green	Type C - 20W			DALI
	A Amber				CAS Casambi
					24 24Vdc
	RGBW				
	RGBW3	Type A - 3W	2x120°	24 24Vdc	DMX
	4 in 1 Chip	Type B - 9W			
RGB+W3000K	Type C - 20W				
RGBW4					
4 in 1 Chip					
RGB+W4000K					

Reference example

VL-GLIDE-W30-Type A-3W-2x120-DALI

Variations



TYPE A

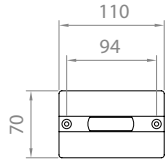


TYPE B

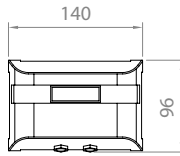


TYPE C

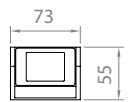
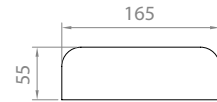
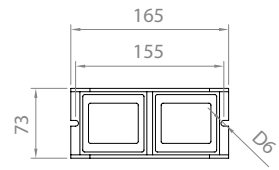
Dimensions



TYPE A

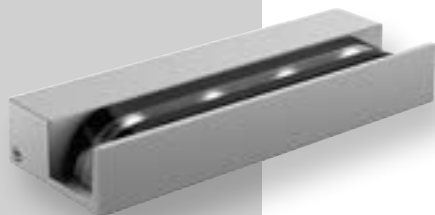


TYPE B



TYPE C

GLIDE.XL



IP67	IK10	CREE XP-G	RECYCLE
FAILURE RATE < 0,1% after 25,000h	LIFE TIME Tested over 50,000h	MIN -20°C MAX 55°C	CLASE I
SP Us	RoHS	CE	RoHS 2

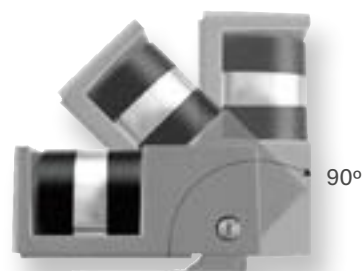
**EFFECTS
EFFECTS SERIES**

References

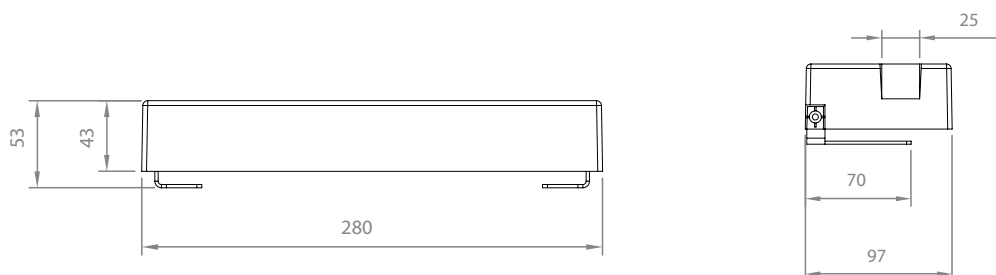
Code	Light Color	Power	Lense	Voltage	Driver
VL-GLIDE.XL	White				
	W24 2400K	36W	2x120°	UNIV 100-264Vac	STD ON/OFF
	W27 2700K			24 24Vdc	
	W30 3000K				
	W40 4000K W60 6000K				
	Single Color (SC)				
R Red	36W	2x120°	UNIV 100-264Vac	STD ON/OFF	
B Blue			24 24Vdc		
G Green					
A Amber					
	RGBW				
RGBW3	36W	2x120°	24 24Vdc	DMX	
4 in 1 Chip RGB+W3000K					
RGBW4					
4 in 1 Chip RGB+W4000K					

Reference example

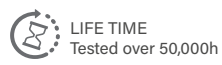
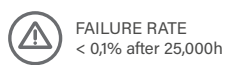
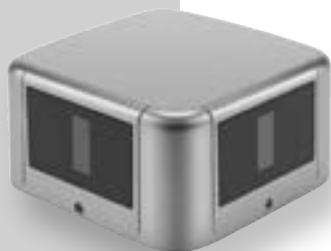
VL-GLIDE.XL-W27-36W-2x120-STD



Dimensions



WAYS



EFFECTS
EFFECTS SERIES

References

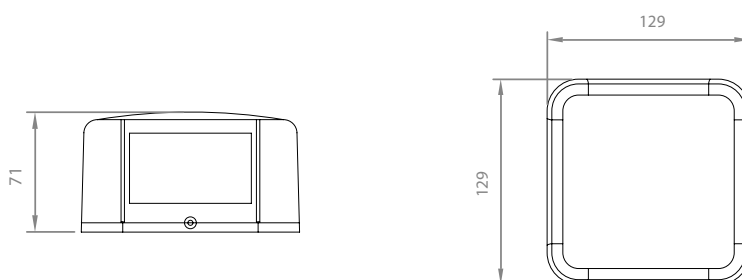
Code	Light Color	Power	Lense	Voltage	Driver
VL-WAYS	White				
	W24 2400K	4W	2°	UNIV 100-264Vac	STD ON/OFF
	W27 2700K	8W	20°		
	W30 3000K		30°	24 24Vdc	
	W40 4000K		60°		
	W60 6000K				
VL-WAYS	Single Color				
	(SC)	4W	2°	UNIV 100-264Vac	STD ON/OFF
	R Red	8W	20°		
	B Blue		30°	24 24Vdc	
	G Green		60°		
	A Amber				

Reference example

VL-WAYS-W40-8W-2-STD



Dimensions



SHIFT.UD



IP67	IK10	CREE XP-G	RECYCLE
FAILURE RATE < 0,1% after 25,000h	LIFE TIME Tested over 50,000h	MIN -20°C MAX 55°C	CLASE I
SP Us			

EFFECTS
EFFECTS SERIES

References

Code	Light Color	Size-Power	Lense		Voltage	Driver
VL-SHIFT.UD	White					
	W24 2400K	Size A - 8W	8°	12°	UNIV 100-264Vac	STD ON/OFF
	W27 2700K	Size B - 16W	20°	30°		010 0-10V
	W30 3000K	Size C - 21W	45°	60°		DALI
	W40 4000K	Size D - 36W	ASYM			CAS Casambi
	W60 6000K					
	Single Color (SC)					
	R Red	Size A - 8W	8°	12°	UNIV 100-264Vac	STD ON/OFF
	B Blue	Size B - 16W	20°	30°		010 0-10V
	G Green	Size C - 21W	45°	60°		DALI
	A Amber	Size D - 36W	ASYM			CAS Casambi

Reference example

VL-SHIFT.UD-W60-SizeA-8W-ASYM-UNIV-STD

Variations



SIZE A
D=100mm
L=170mm



SIZE B
D=100mm
L=250mm

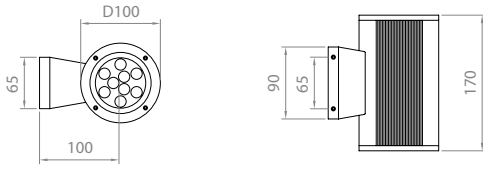


SIZE C
D=155mm
L=250mm

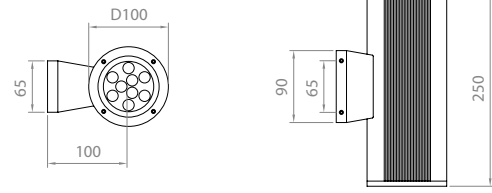


SIZE D
D=155mm
L=350mm

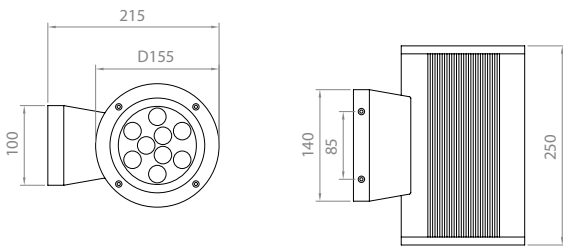
Dimensions



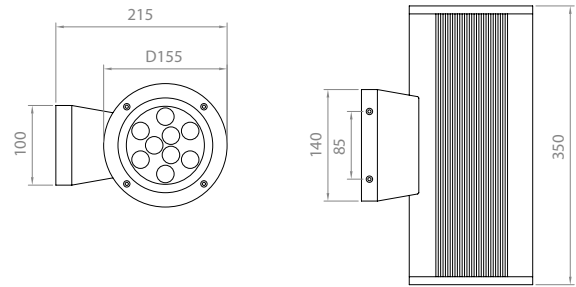
SIZE A



SIZE B



SIZE C



SIZE D

SHIFT.D



IP67	IK10	CREE XP-G	RECYCLE
FAILURE RATE < 0,1% after 25,000h	LIFE TIME Tested over 50,000h	MIN -20°C MAX 55°C	CLASE I

EFFECTS
EFFECTS SERIES

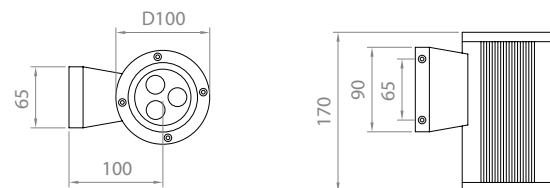
References

Code	Light Color	Size-Power	Lense		Voltage	Driver
VL-SHIFT.D	White					
	W24 2400K	Size A - 3,5W	8°	12°	UNIV 100-264Vac	STD ON/OFF
	W27 2700K	Size A - 8W	20°	30°		010 0-10V
	W30 3000K	Size B - 11W	45°	60°		DALI
	W40 4000K	Size B - 16W	ASYM			CAS Casambi
W60 6000K						
White - COB Led module (SC)						
W30 3000K	Size A - 10W	15°		UNIV 100-264Vac		
W40 4000K	Size B - 26W					
Single Color (SC)						
R Red	Size A - 3,5W	8°	12°	UNIV 100-264Vac	STD ON/OFF	
B Blue	Size A - 8W	20°	30°		010 0-10V	
G Green	Size B - 11W	45°	60°		DALI	
A Amber	Size B - 16W	ASYM			CAS Casambi	

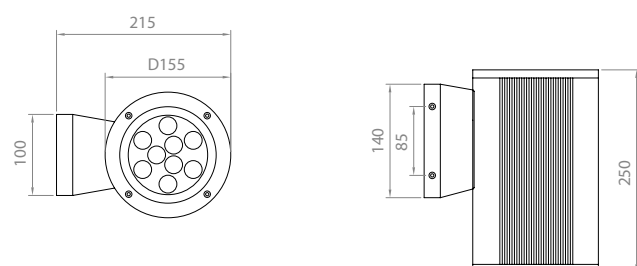
Reference example

VL-SHIFT.D-W40-SizeB-16W-ASYM-UNIV-STD

Dimensions



SIZE A



SIZE B

Variations



SIZE A
D=100mm



SIZE B
D=155mm

SHIFT.CL



IP67	IK10	CREE XP-G	RECYCLE
FAILURE RATE < 0,1% after 25,000h	LIFE TIME Tested over 50,000h	MIN -20°C MAX 55°C	CLASE I

EFFECTS
EFFECTS SERIES

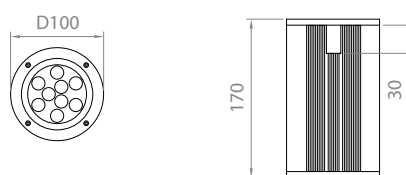
References

Code	Light Color	Size-Power	Lense		Voltage	Driver
VL-SHIFT.CL	White					
	W24 2400K	Size A - 3,5W	8°	12°	UNIV 100-264Vac	STD ON/OFF
	W27 2700K	Size A - 8W	20°	30°		010 0-10V
	W30 3000K	Size B - 11W	45°	60°		DALI
	W40 4000K	Size B - 16W	ASYM			DALI
W60 6000K				CAS Casambi		
	White - COB Led module (SC)					
	W30 3000K	Size A - 10W	15°		UNIV 100-264Vac	
	W40 4000K	Size B - 26W				
	Single Color (SC)					
	R Red	Size A - 3,5W	8°	12°	UNIV 100-264Vac	STD ON/OFF
	B Blue	Size A - 8W	20°	30°		010 0-10V
	G Green	Size B - 11W	45°	60°		DALI
	A Amber	Size B - 16W	ASYM			DALI
						CAS Casambi

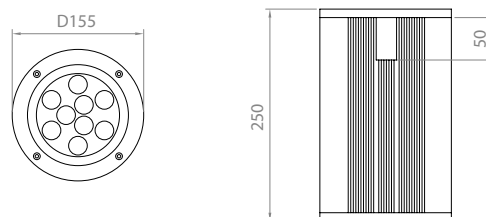
Reference example

VL-SHIFT.CL-W24-SizeA-3,5W-8-UNIV-STD

Dimensions



SIZE A



SIZE B

Variations



SIZE A
D=100mm



SIZE B
D=155mm