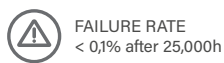
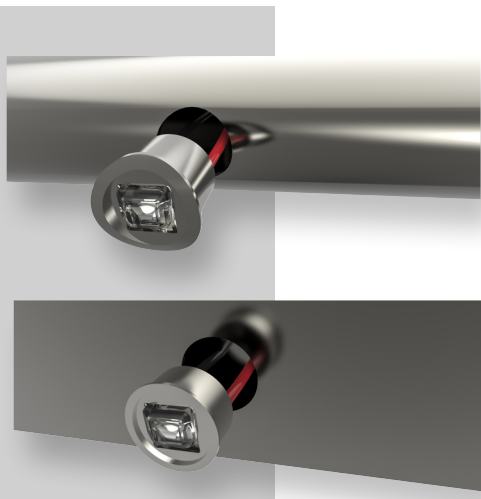


LUUBA

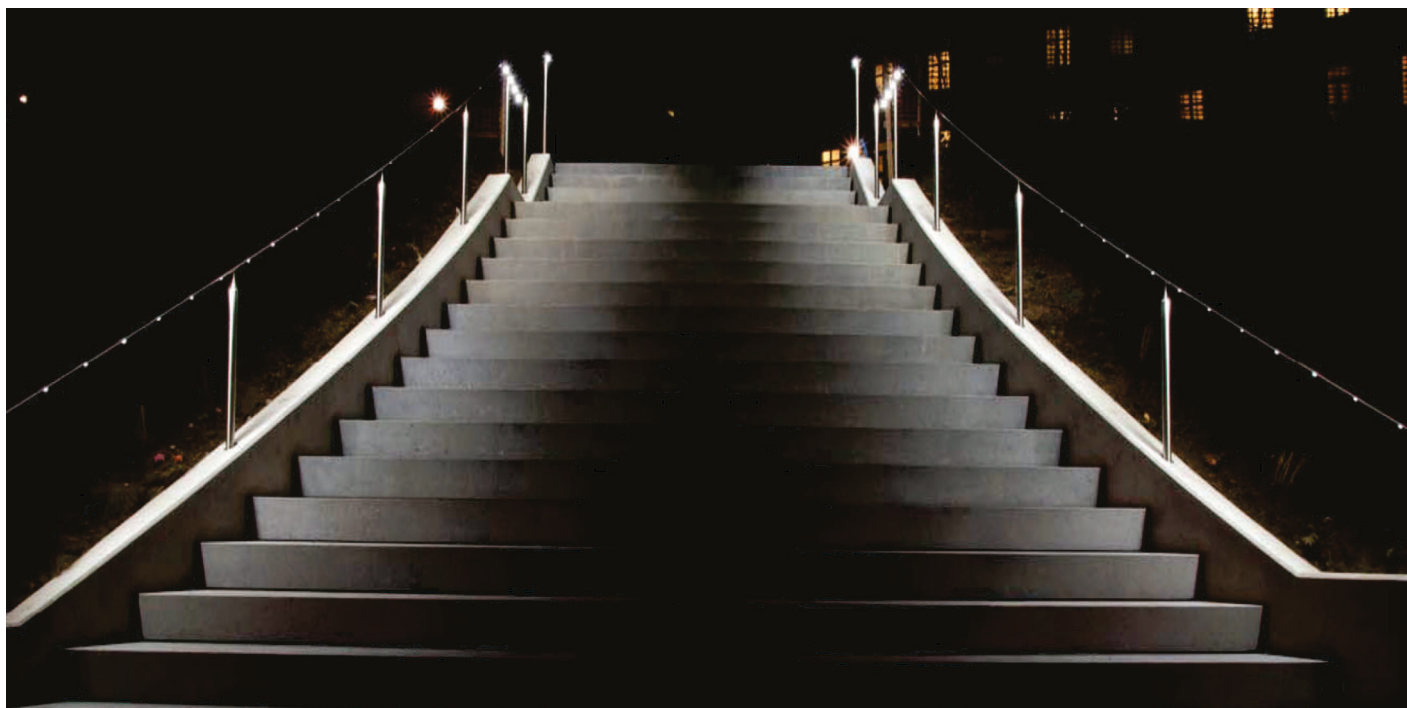


EFFECTS
EFFECTS SERIES

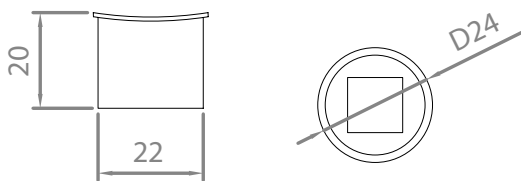
References

Code	Shape	Ligth Color	Lense	
VL-LUUBA	RD Round	W24 2400K	8°	15°
	FL Flat	W27 2700K	25°	30°
		W30 3000K	40°	50°
		W40 4000K	15x45°	45x15°
		W60 6000K	W	ASYM1
		R Red	ASYM2	
		B Blue		
		G Green		
		A Amber		

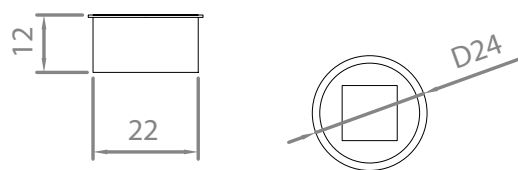
VL-LUUBA-RD-W24-ASYM2



Dimensions



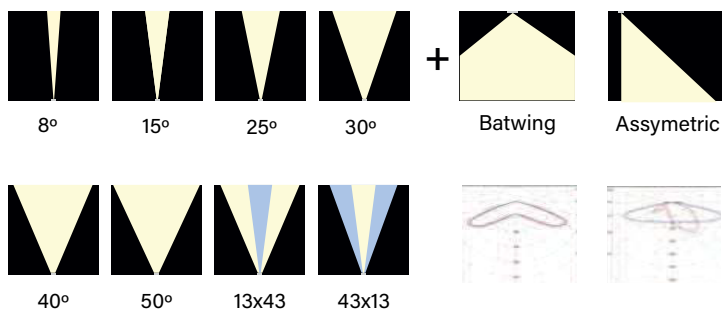
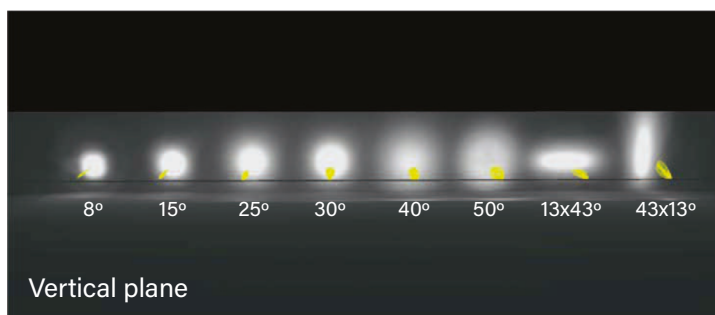
LUUBA ROUND



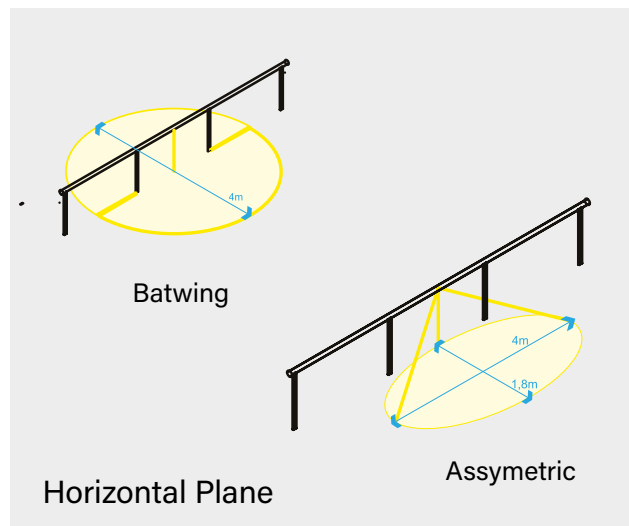
LUUBA FLAT

Optics

General lighting



Path lighting



Electrical

LUUBA works at constant current.
It admits current from 100mA to 900mA.
If outside temperature can reach more than 50°C,
current must not exceed 700mA.

Feeding current	Operating voltage	Power	Luminous flux
100mA	2,58 V	0,26 W	37lm
200mA	2,62 V	0,52 W	74lm
300mA	2,65 V	0,80 W	118lm
400mA	2,70 V	0,95 W	148lm
500mA	2,75 V	1,38 W	214lm
600mA	2,77 V	1,67 W	240lm
700mA	2,80 V	1,96 W	274lm
800mA	2,84 V	2,28 W	310lm
900mA	2,87 V	2,60 W	350lm

*Data referred to 4000K

