



SHELL.5



SHELL.3



SHELL.1



SHELL.0



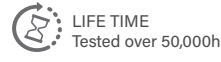
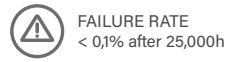
SHELL.MINI



SHELL.NANO

CIRCULAR PROJECTORS
SHELL SERIES

SHELL.5



CIRCULAR PROJECTORS
SHELL SERIES

References

Code	Type	Finish	Light Color	Power	Lense		Voltage	Driver	
VL-SH5	A Base	LG Light grey	White						
	B Base 2	DK Dark grey	W24 2400K	45W	2,5° (45W)	6°	UNIV 100-264Vac	STD ON/OFF	
	C Pole Arm	WH White	W27 2700K	50W	12°	20°	24 24Vdc	010 0-10V	
	D Pole mounted	BK Black	W30 3000K	60°	30°	40°		DALI	
	E Stripe mounted	RAL Any RAL color	W40 4000K		60°	5x20°		CAS Casambi	
	F Nut			W60 6000K		10x70°			
				Single Color (SC)					
				R Red	45W	6°	12°	UNIV 100-264Vac	STD ON/OFF
				B Blue	50W	20°	30°	24 24Vdc	010 0-10V
				G Green		40°	60°		DALI
				A Amber		5x20°	10x70°		CAS Casambi
				RGBW					
				RGBW3	50W	15°	20°	UNIV 100-264Vac	DALI
			4 in 1 Chip		30°	60°	24 24Vdc	DMX	
			RGB+W3000K		15x60°			CAS Casambi	
			RGBW4						
			4 in 1 Chip						
			RGB+W4000K						

Reference example

VL-SH5-A-DK-W30-45W-2,5°-UNIV-DALI

Variations



A
Base



B
Base 2



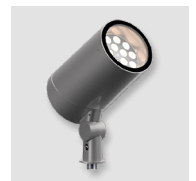
C
Pole Arm
D=45mm



D
Pole mounted
D67-325mm

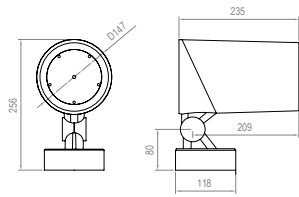


E
Stripe mounted

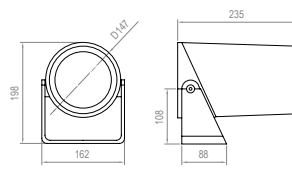


F
Nut (M10x1,5mm)

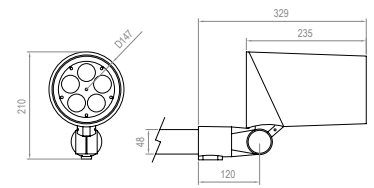
Dimensions



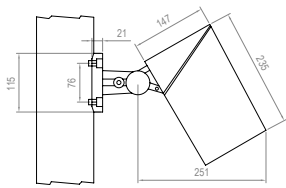
TYPE A



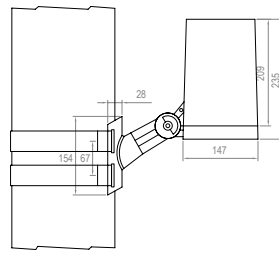
TYPE B



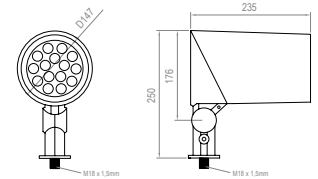
TYPE C



TYPE D



TYPE E



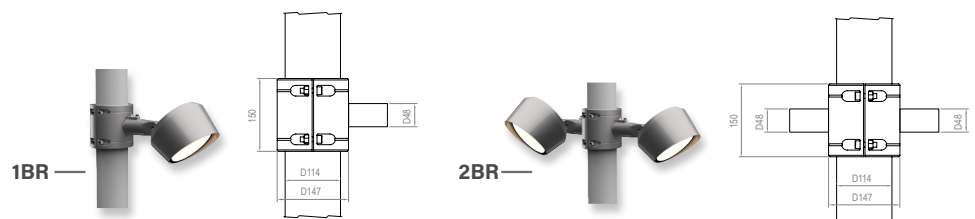
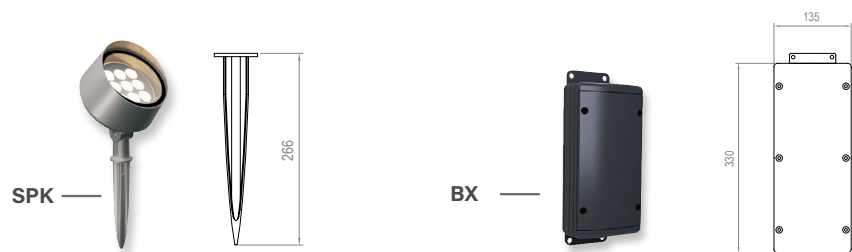
TYPE F

Accessories

Code	Accessories
VL-SH5	HC Honeycomb Grid MSH Mesh HO Hood VS Visor

Code	Accessories
VL-SH5	*SPK SPIKE *1BR Bracket for 1 projector *2BR Bracket for 2 projector *BX Elevated Box *CBLX Special length cable

** Must be used with Type F
* Must be used with Type C
* Must be used with Type C
* Must be used with Type F
* Instead of X, put length of cable needed
Example: VL-SH5-CBL-10m*



SHELL.3



IP66	IK09	CREE XP-G	RECYCLE
FAILURE RATE < 0,1% after 25,000h	LIFE TIME Tested over 50,000h	MIN -20°C MAX 55°C	CLASE I
SP US	RoHS	CE	RoHS 2

CIRCULAR PROJECTORS
SHELL SERIES

References

Code	Type	Finish	Light Color	Power	Lense		Voltage	Driver	
VL-SH3	A Base	LG Light grey	White						
	B Base 2	DK Dark grey	W24 2400K	10W	1,5° (10W)	2,5°	UNIV 100-264Vac	STD ON/OFF	
	C Pole Arm	WH White	W27 2700K	12W	6°	12°	24 24Vdc	010 0-10V	
	D Pole mounted	BK Black	W30 3000K	15W	20°	30°		DALI	
	E Stripe mounted	RAL Any RAL color	W40 4000K	30W	40°	60°	CAS Casambi		
	F Nut		W60 6000K	5x20°	10x70°				
	Single Color (SC)								
	R Red		12W	6°	12°	UNIV 100-264Vac		STD ON/OFF	
	B Blue		15W	20°	30°	24 24Vdc		010 0-10V	
	G Green		30W	40°	60°			DALI	
	A Amber			5x20°	10x70°	CAS Casambi			
	RGBW								
RGBW3		12W	15°	20°	24 24Vdc		DALI		
4 in 1 Chip			30°	60°			DMX		
RGB+W3000K			15x60°		CAS Casambi				
RGBW4									
4 in 1 Chip									
RGB+W4000K									

Reference example

VL-SH3-A-WH-W24-10W-1,5°-UNIV-STD

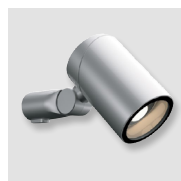
Variations



A
Base



B
Base 2



C
Pole Arm
D=45mm



D
Pole mounted
D67-325mm

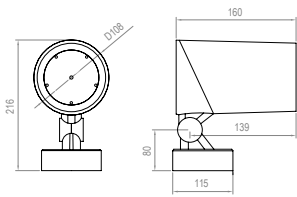


E
Stripe mounted

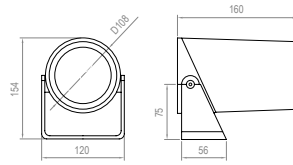


F
Nut (M10x1,5mm)

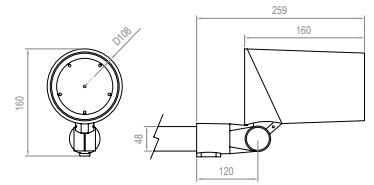
Dimensions



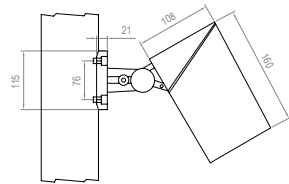
TYPE A



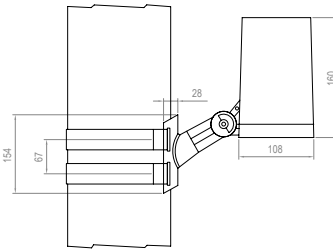
TYPE B



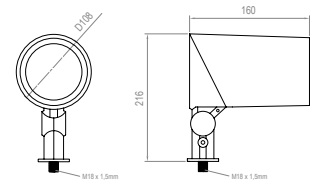
TYPE C



TYPE D



TYPE E



TYPE F

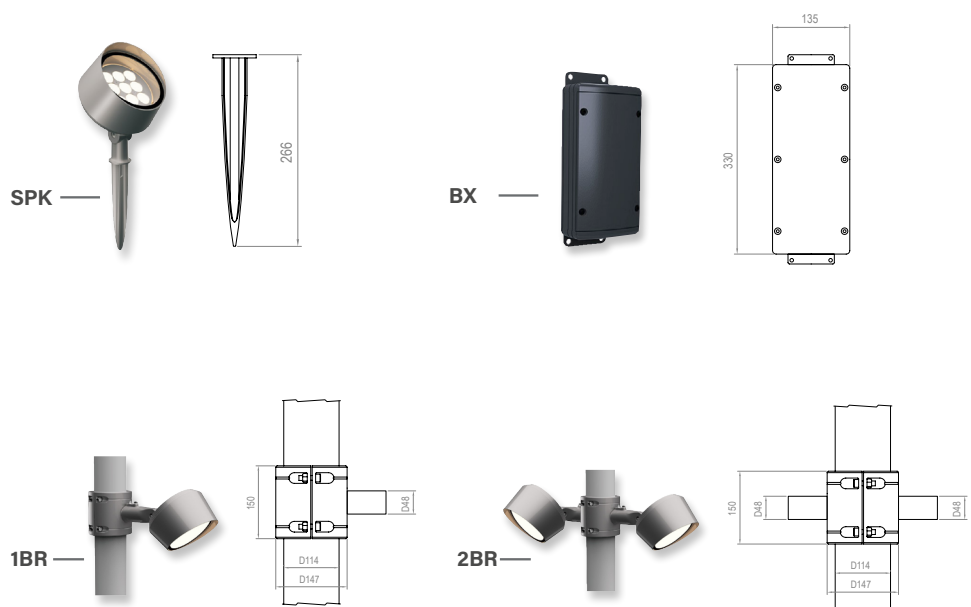
Accessories

Code	Accessories
VL-SH3	HC Honeycomb Grid MSH Mesh HO Hood VS Visor



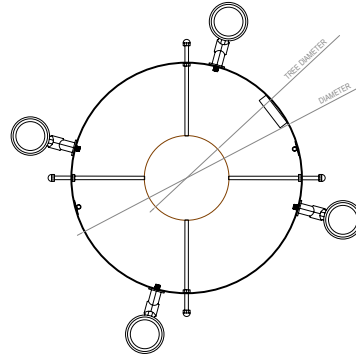
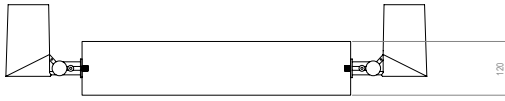
Code	Accessories
VL-SH3	*SPK SPIKE *1BR Bracket for 1 projector *2BR Bracket for 2 projector *BX Elevated Box *CBLX Special length cable

** Must be used with Type F
* Must be used with Type C
* Must be used with Type C
* Must be used with Type F
* Instead of X, put length of cable needed
Example: VL-SH3-CBL-10m*



Accessories

Code	Description	Diameter	N° of projectors
VL-SH3	RNG RING	50 50cm	2P 2 projectors
		60 60cm	3P 3 projectors
		70 70cm	4P 4 projectors
		80 80cm	6P 6 projectors
	<i>Suggested diameter = diameter of tree trunk + 10cm/15cm</i>		<i>* projectors references must be order separately</i>
			<i>** For 24Vdc projectors, ring can allocate 1 power supply for all projectors</i>



SHELL.1



IP66	IK09	CREE XP-G	RECYCLE
FAILURE RATE < 0,1% after 25,000h	LIFE TIME Tested over 50,000h	MIN -20°C MAX 55°C	CLASE I
SP US	RoHS	CE	RoHS 2

CIRCULAR PROJECTORS
SHELL SERIES

References

Code	Type	Finish	Light Color	Power	Lense		Voltage	Driver
VL-SH1	A Base B Base 2 D Pole mounted F Nut	LG Light grey DK Dark grey WH White BK Black RAL Any RAL color	White	10W	2,5° 15° 30° 60° 10x70°	8° 20° 40° 5x20°	UNIV 100-264Vac 24 24Vdc	STD ON/OFF
			W24 2400K					R010 Remote 0-10V
			W27 2700K					RD Remote DALI
			W30 3000K					RCAS Remote Casambi
			W40 4000K					
			W60 6000K					
			White -COB Led module	16W	15° 36° 24° 50°	UNIV 100-264Vac	R010 Remote 0-10V	
			W30 300K				RD Remote DALI	
			W40 400K				RCAS Remote Casambi	
			Single Color (SC)	10W	3° 12° 30° 60° 10x70°	8° 20° 40° 5x20°	UNIV 100-264Vac 24 24Vdc	STD ON/OFF
			R Red					R010 Remote 0-10V
			B Blue					RD Remote DALI
			G Green					RCAS Remote Casambi
			A Amber					
			RGBW	8W	15° 30° 15x60°	20° 60°	24 24Vdc	RD Remote DALI
RGBW3	DMX							
4 in 1 Chip RGB+W3000K	RCAS Remote Casambi							
RGBW4								
4 in 1 Chip RGB+W4000K								

Reference example

VL-SH1-A-WH-W24-10W-60°-UNIV-STD

Variations



A
Base



B
Base 2

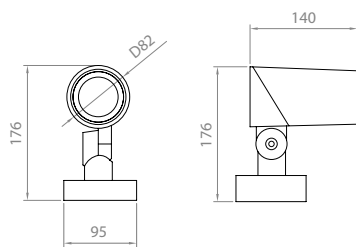


D
Pole mounted
D67-325mm

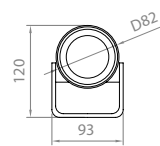


F
Nut (M10x1,5mm)

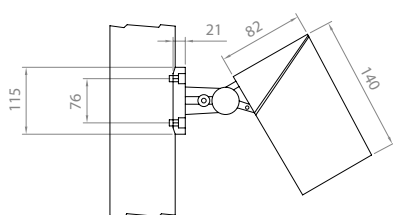
Dimensions



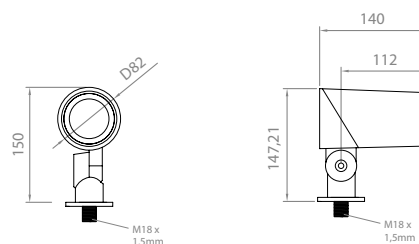
TYPE A



TYPE B



TYPE D



TYPE F

Accessories

Code	Accessories
------	-------------

VL-SH1
HC Honeycomb Grid
HO Hood
VS Visor

HC



HO



VS

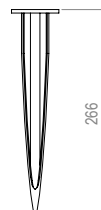


Code	Accessories
------	-------------

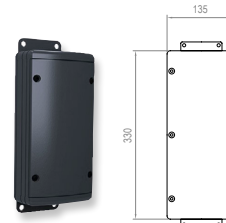
VL-SH1
***SPK** SPIKE
***1BR** Bracket for 1 projector
***CBLX** Special length cable

** Must be used with Type F*
** Must be used with Type C*
** Instead of X, put length of cable needed*
Example: VL-SH1-CBL-10m

SPK

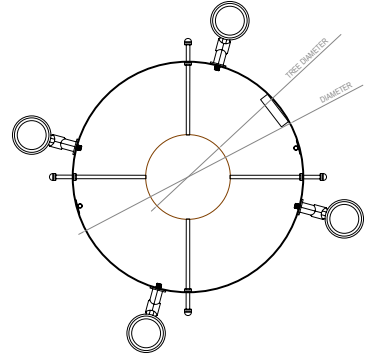
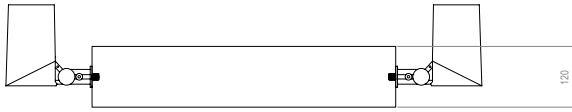


BX

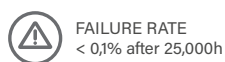


Accessories

Code	Description	Diameter	N° of projectors
VL-SH1	RNG RING	50 50cm	2P 2 projectors
		60 60cm	3P 3 projectors
		70 70cm	4P 4 projectors
		80 80cm	6P 6 projectors
			8P 8 projectors
	<i>Suggested diameter = diameter of tree trunk + 10cm/15cm</i>		<i>* projectors references must be order separately</i>
			<i>** For 24Vdc projectors, ring can allocate 1 power supply for all projectors</i>



SHELL.0



CIRCULAR PROJECTORS SHELL SERIES

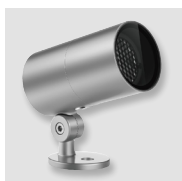
References

Code	Type	Finish	Light Color	Power	Lense		Voltage	Driver	
VL-SH0	A Base F Nut	LG Light grey	White	10W	2,5° 12° 30° 60° 10x70°	6° 20° 40° 5x20°	UNIV 100-264Vac 12 12Vdc	STD ON/OFF R010 Remote 0-10V RD Remote DALI RCAS Casambi	
		DK Dark grey	W24 2400K						
		WH White	W27 2700K						
		BK Black	W30 3000K						
		RAL Any RAL color	W40 4000K						
			W60 6000K						
		Single Color (SC)							
		R Red							
		B Blue							
		G Green							
		A Amber							
		RGBW							
		RGBW3							
		4 in 1 Chip							
		RGB+W3000K							
RGBW4									
4 in 1 Chip									
RGB+W4000K									

Reference example

VL-SH0-A-WH-W24-10W-60°-UNIV-CAS

Variations

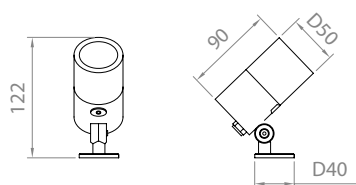


A
Base

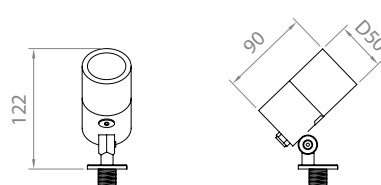


F
Nut (M10x1,5mm)

Dimensions





TYPE A



TYPE F

Accessories

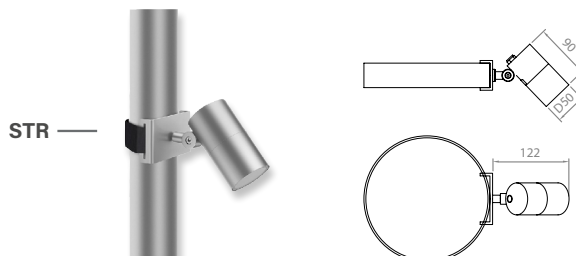
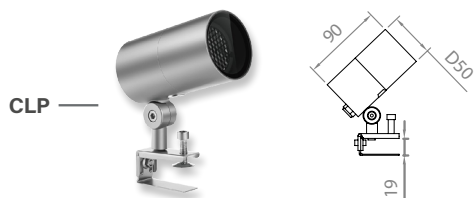
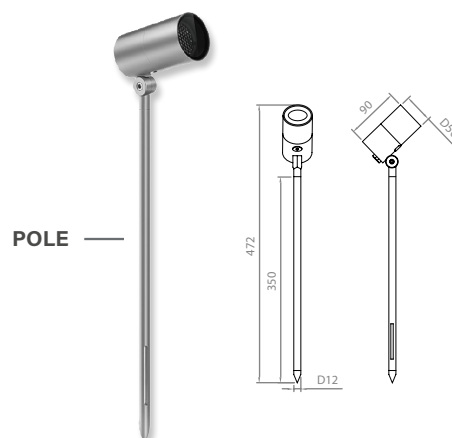
Code	Accessories
VL-SH0	HC Honeycomb Grid HO Hood 75 mm

Code	Accessories
VL-SH0	*SPK SPIKE *BX Elevated Box *POLE POLE *CLP CLAMP *STR STRIPE *CBLX Special length cable

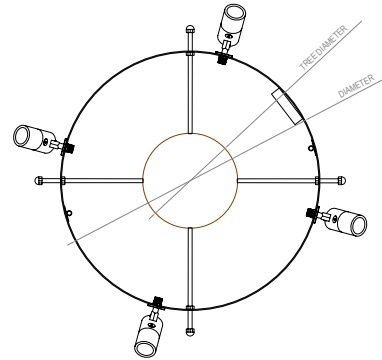
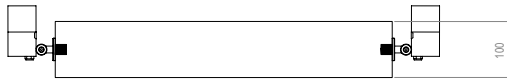
** Must be used with Type F*
** Must be used with Type F*
** Must be used with Type F*
** Must be used with Type F*
** Must be used with Type F*

** Instead of X, put length of cable needed*
Example: VL-SH0-CBL-10m



Accessories

Code	Description	Diameter	N° of projectors
VL-SH0	RNG RING	50 50cm	2P 2 projectors
		60 60cm	3P 3 projectors
		70 70cm	4P 4 projectors
		80 80cm	6P 6 projectors
	<i>Suggested diameter = diameter of tree trunk + 10cm/15cm</i>		<i>* projectors references must be order separetly</i>
			<i>** For 24Vdc projectors, ring can allocate 1 power supply for all projectors</i>



SHELL.MINI



IP66	IK09	CREE XP-G	RECYCLE
FAILURE RATE < 0,1% after 25,000h	LIFE TIME Tested over 50,000h	MIN -20°C MAX 55°C	CLASE I
SP US	RoHS	CE	RoHS 2

CIRCULAR PROJECTORS
SHELL SERIES

References

Code	Type	Finish	Light Color	Power	Lense		Voltage	Driver	
VL-SH.MIN	A Base F Nut	LG Light grey	White	6W	8°	12°	UNIV 100-264Vac	STD ON/OFF	
		DK Dark grey	W24 2400K						20°
	WH White	W27 2700K	40°		60°				
	BK Black	W30 3000K	15x30°		10x60°	RD Remote DALI			
	RAL Any RAL color	W40 4000K	15x30°		10x60°		RCAS Casambi		
		W60 6000K							
	Single Color (SC)				6W	8°	12°	UNIV 100-264Vac	STD ON/OFF
	R Red		20°	30°					
	B Blue		40°	60°					
	G Green		15x30°	10x70°		RD Remote DALI			
	A Amber		10x70°				RCAS Casambi		
	RGBW				6W	20°		40°	12 12Vdc
	RGBW3	4 in 1 Chip	60°	15x60°			DMX		
		RGB+W3000K	15x25°			RCAS Casambi			
	RGBW4	4 in 1 Chip							
	RGB+W4000K								

Reference example

VL-SH.MIN-A-WH-W24-6W-60°-UNIV-STD

Variations

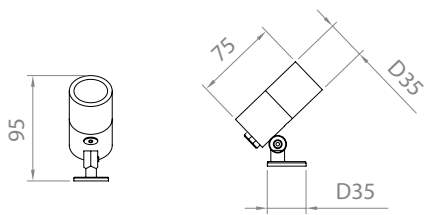


A
Base

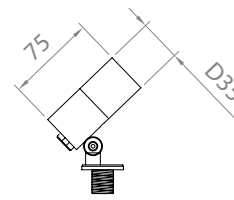


F
Nut (M10x1,5mm)

Dimensions





TYPE A



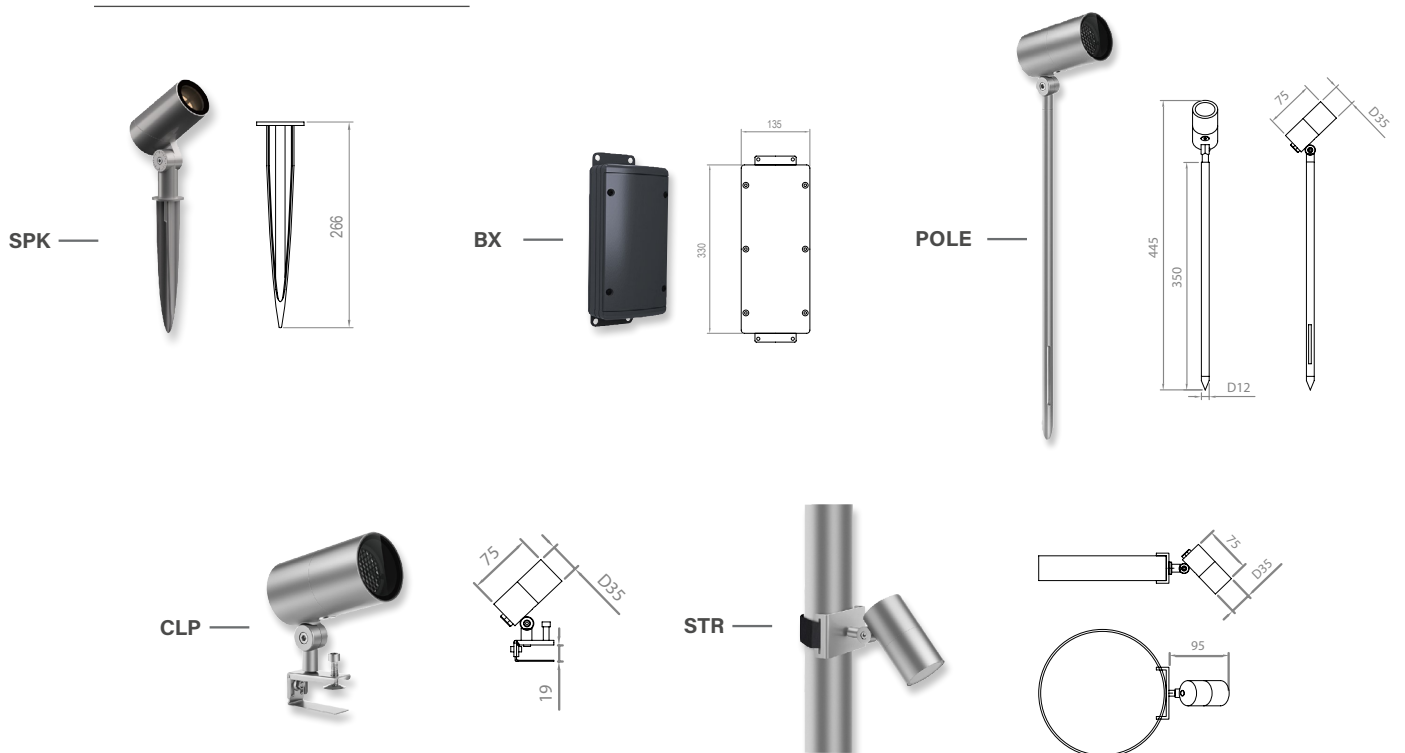
TYPE F

Accessories

Code	Accessories
VL-SH.MIN	HC Honeycomb Grid HO Hood 57 mm

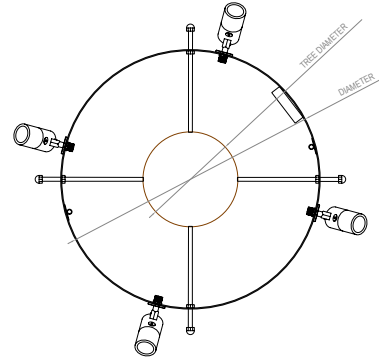
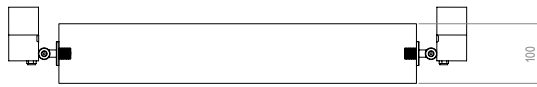
HC		HO	
----	--	----	--

Code	Accessories
VL-SH.MIN	<ul style="list-style-type: none"> *SPK SPIKE *BX Elevated Box *POLE POLE *CLP CLAMP *STR STRIPE *CBLX Special length cable <p><i>* Must be used with Type F</i> <i>* Must be used with Type F</i> <i>* Must be used with Type F</i> <i>* Must be used with Type F</i> <i>* Must be used with Type F</i></p> <p><i>* Instead of X, put length of cable needed</i> <i>Example: VL-SH.MIN-CBL-10m</i></p>



Accessories

Code	Description	Diameter	N° of projectors
VL-SH.MIN	RNG RING	50 50cm	2P 2 projectors
		60 60cm	3P 3 projectors
		70 70cm	4P 4 projectors
		80 80cm	6P 6 projectors
		80 80cm	8P 8 projectors
	<i>Suggested diameter = diameter of tree trunk + 10cm/15cm</i>	<i>* projectors references must be order separetly</i>	<i>** For 24Vdc projectors, ring can allocate 1 power supply for all projectors</i>



SHELL.NANO



IP66	IK09	CREE XP-G	RECYCLE
FAILURE RATE < 0,1% after 25,000h	LIFE TIME Tested over 50,000h	MIN -20°C MAX 55°C	CLASE I
SP US	RoHS	CE	RoHS 2

CIRCULAR PROJECTORS
SHELL SERIES

References

Code	Type	Finish	Light Color	Power	Lense		Voltage	Driver	
VL-SH.NANO	A Base F Nut	LG Light grey	White	3W	20°	30°	12 12Vdc	STD ON/OFF	
		DK Dark grey	W24 2400K						40°
	WH White	W27 2700K	25x45°		24 12Vdc	R010 Remote 0-10V			
	BK Black	W30 3000K							
	RAL Any RAL color	W40 4000K	RD Remote DALI						
		W60 6000K			RCAS Casambi				
				Single Color (SC)					
			R Red		3W	20°	30°	12 12Vdc	STD ON/OFF
			B Blue			40°	60°	24 12Vdc	R010 Remote 0-10V
			G Green			25x45°			RD Remote DALI
			A Amber						RCAS Casambi

Reference example

VL-SH.NANO-A-WH-W24-3W-60°-24-STD

Variations

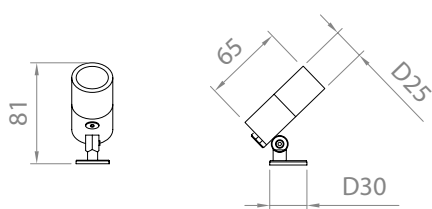


A
Base

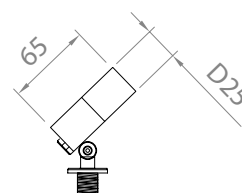


F
Nut (M10x1,5mm)

Dimensions




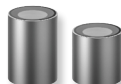
TYPE A



TYPE F

Accessories

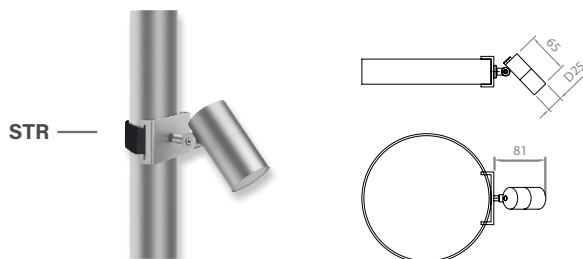
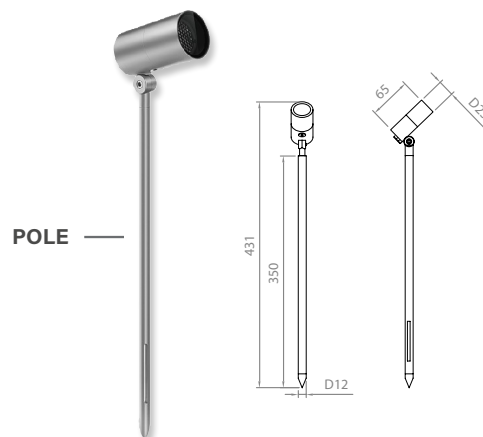
Code	Accessories
VL-SH.NANO	<p>HC Honeycomb Grid</p> <p>HO Hood 48 mm</p>

Code	Accessories
VL-SH.NANO	<p>*SPK SPIKE</p> <p>*BX Elevated Box</p> <p>*POLE POLE</p> <p>*CLP CLAMP</p> <p>*STR STRIPE</p> <p>*CBLX Special length cable</p>

** Must be used with Type F*
** Must be used with Type F*
** Must be used with Type F*
** Must be used with Type F*
** Must be used with Type F*

** Instead of X, put length of cable needed*
Example: VL-SH.NANO-CBL-10m



Accessories

Code	Description	Diameter	N° of projectors
VL-SH.NANO	RNG RING	50 50cm	2P 2 projectors
		60 60cm	3P 3 projectors
		70 70cm	4P 4 projectors
		80 80cm	6P 6 projectors
		<i>Suggested diameter = diameter of tree trunk + 10cm/15cm</i>	<i>* projectors references must be order separetly</i>
			<i>** For 24Vdc projectors, ring can allocate 1 power supply for all projectors</i>

