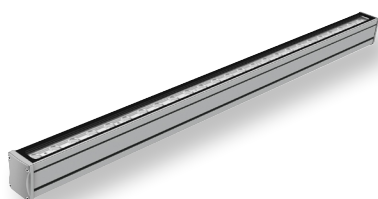


LINNEA.100



LINNEA.60



LINNEA.50



LINNEA.40



LINNEA.30



MAXLINE



LINNEA.CURVE



LINNEA.TUBE

LINNERS
LINNEA SERIES

LINNEA.100



IP66	IK09	CREE XP-G	RECYCLE
FAILURE RATE < 0,1% after 25,000h	LIFE TIME Tested over 50,000h	MIN -20°C MAX 55°C	CLASE I
SP US	CE	RoHS	RoHS 2

LINNERS
LINNEA SERIES

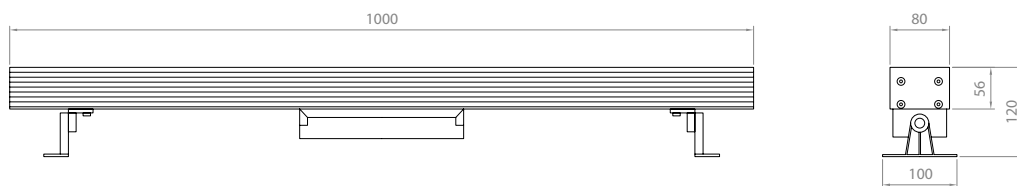
References

Code	Finish	Light Color	Lenght-Power	Lense		Voltage	Driver
VL-LN.100	LG Light grey RAL Any RAL color	White					
		W24 2400K	300mm-60W	2,5°	6°	UNIV 100-264Vac	STD ON/OFF
	W27 2700K	500mm-100W	12°	20°	010 0-10V		
	W30 3000K	1000mm-200W	30°	40°	DALI		
	W40 4000K		60°	10x70°	CAS Casambi		
	W60 6000K		5x20°				
	Single Color (SC)						
	R Red	300mm-60W	6°	12°	UNIV 100-264Vac	STD ON/OFF	
	B Blue	500mm-100W	20°	30°		010 0-10V	
	G Green	1000mm-200W	40°	60°		DALI	
	A Amber		10x70°	5x20°		CAS Casambi	
	RGBW						
	RGBW3	500mm-100W	15°	20°	UNIV 100-264Vac	DALI	
	4 in 1 Chip RGB+W3000K	1000mm-200W	30°	60°		DMX	
		10x30°	10x60°	CAS Casambi			
RGBW4							
4 in 1 Chip RGB+W4000K							
RGBW7							
7 in 1 Chip RGBWCLA							

Reference example

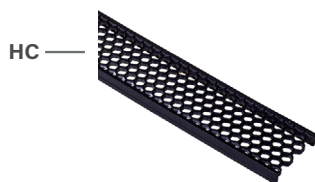
VL-LN100-RGB3-500mm-100W-60-UNIV-DMX

Dimensions



Accessories

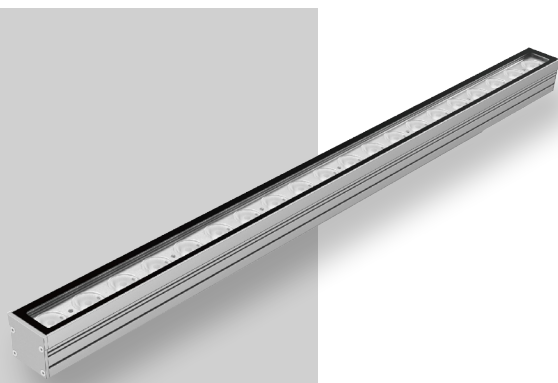
Code	Accessories
VL-LN.100	HC Honeycomb Grid



Code	Accessories
VL-LN.100	IO In&out cable with connectors *CBLX Special length cable

** Instead of X, put length of cable needed
Example: VL-LN100-CBL-10m*

LINNEA.60



IP66	IK09	CREE XP-G	RECYCLE
FAILURE RATE < 0,1% after 25,000h	LIFE TIME Tested over 50,000h	MIN -20°C MAX 55°C	CLASE I
SP US	CE	RoHS	RoHS 2

LINNERS
LINNEA SERIES

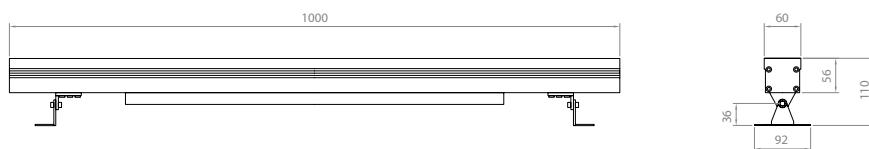
References

Code	Finish	Light Color	Lenght-Power	Lense		Voltage	Driver
VL-LN.60	LG Light grey RAL Any RAL color	White					
		W24 2400K	300mm-30W	2,5°	6°	UNIV 100-264Vac	STD ON/OFF
	W27 2700K	500mm-48W	12°	20°	010 0-10V		
	W30 3000K	1000mm-95W	30°	40°	DALI		
	W40 4000K		60°	10x70°	CAS Casambi		
	W60 6000K		5x20°				
	Single Color (SC)						
	R Red	300mm-30W	6°	12°	UNIV 100-264Vac	STD ON/OFF	
	B Blue	500mm-48W	20°	30°		010 0-10V	
	G Green	1000mm-95W	40°	60°		DALI	
	A Amber		10x70°	5x20°		CAS Casambi	
	RGBW						
	RGBW3	500mm-50W	15°	20°	24 24Vdc	DALI	
	4 in 1 Chip	1000mm-100W	30°	60°		DMX	
RGB+W3000K		10x30°	10x60°	CAS Casambi			
RGBW4	4 in 1 Chip						
	RGB+W4000K						
RGBW7	7 in 1 Chip						
	RGBWCLA						

Reference example

VL-LN.60-R-300mm-30W-6-UNIV-STD

Dimensions

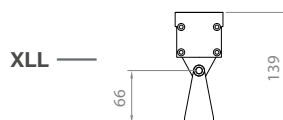
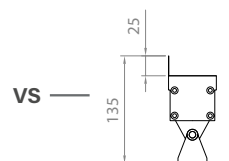


Accessories

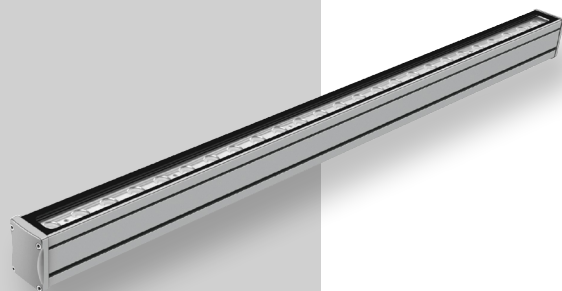
Code	Accessories
VL-LN.60	HC Honeycomb Grid VS Visor

Code	Accessories
VL-LN.60	XLL Extra long legs IO In&out cable with connectors *CBLX Special length cable

** Instead of X, put length of cable needed
Example: VL-LN60-CBL-10m*



LINNEA.50



IP66	IK09	CREE XP-G	RECYCLE
FAILURE RATE < 0,1% after 25,000h	LIFE TIME Tested over 50,000h	MIN -20°C MAX 55°C	CLASE I

LINNERS
LINNEA SERIES

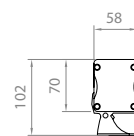
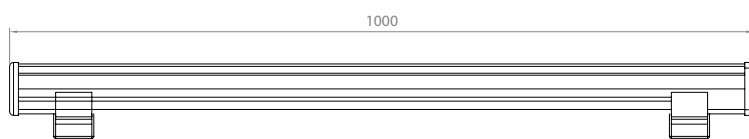
References

Code	Finish	Light Color	Lenght-Power	Lense		Voltage	Driver
VL-LN.50	LG Light grey RAL Any RAL color	White					
		W24 2400K	500mm-11W	8°	12,5°	UNIV 100-264Vac	STD ON/OFF
		W27 2700K	1000mm-14W	20°	30°	24 24Vdc	010 0-10V
		W30 3000K	1000mm-22W	40°	60°		DALI
		W40 4000K	1000mm-28W	15x30°	10x60°	ASYM	CAS Casambi
		W60 6000K	1000mm-42W				
		Single Color (SC)					
		R Red	500mm-11W	8°	12,5°	UNIV 100-264Vac	STD ON/OFF
		B Blue	1000mm-14W	20°	30°	24 24Vdc	010 0-10V
		G Green	1000mm-22W	40°	60°		DALI
		A Amber	1000mm-28W	15x30°	10x60°	ASYM	CAS Casambi
			1000mm-42W				
		RGBW					
		RGBW3	1000mm-72W	20°	30°	36 36Vdc	DALI
		4 in 1 Chip		60°	15x60°		DMX
	RGB+W3000K					CAS Casambi	
	RGBW4						
	4 in 1 Chip						
	RGB+W4000K						

Reference example

VL-LN.50-W27-1000mm-42W-10x60-UNIV-STD

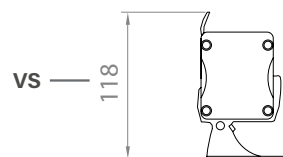
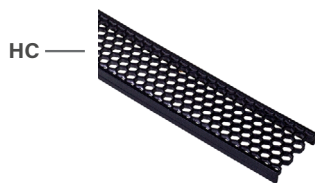
Dimensions



Accesories

Code	Accesories
------	------------

VL-LN.50 **HC** Honeycomb Grid
VS Visor



Code	Accesories
------	------------

VL-LN.50 **IO** In&out cable with connectors
***CBLX** Special length cable

** Instead of X, put length of cable needed
Example: VL-LN60-CBL-10m*

LINNEA.40



IP66	IK09	CREE XP-G	RECYCLE
FAILURE RATE < 0,1% after 25,000h	LIFE TIME Tested over 50,000h	MIN -20°C MAX 55°C	CLASE I
SP US	CE	RoHS	RoHS 2

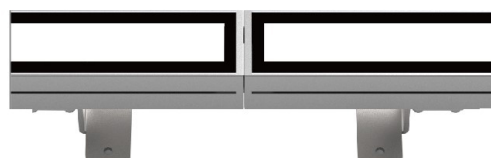
LINNERS
LINNEA SERIES

References

Code	Finish	Light Color	Lenght-Power	Lense		Voltage	Driver	
VL-LN.40	LG Light grey RAL Any RAL color	White						
		W24 2400K	300mm-8W	6°	8°	UNIV 100-264Vac (only for 1000mm)	STD ON/OFF	
	W27 2700K	500mm-9W	12°	20°	010 0-10V			
	W30 3000K	500mm-12W	30°	40°	24 24Vdc	DALI		
	W40 4000K	500mm-18W	60°	15x30°		CAS Casambi		
	W60 6000K	500mm-24W	10x60°					
		1000mm-18W						
		1000mm-24W						
		1000mm-36W						
	Single Color (SC)							
	R Red	300mm-8W	6°	8°	UNIV 100-264Vac (only for 1000mm)	STD ON/OFF		
	B Blue	500mm-9W	12°	20°		010 0-10V		
	G Green	500mm-12W	30°	40°	24 24Vdc	DALI		
	A Amber	500mm-18W	60°	15x30°		CAS Casambi		
	500mm-24W	10x60°						
	1000mm-18W							
	1000mm-24W							
	1000mm-36W							
RGBW								
RGBW3	300mm-12W	20°	40°	24 24Vdc	DMX			
4 in 1 Chip	500mm-18W	60°	15x60°					
RGB+W3000K	1000mm-36W	15x25°						
RGBW4	1000mm-48W							
4 in 1 Chip								
RGB+W4000K								

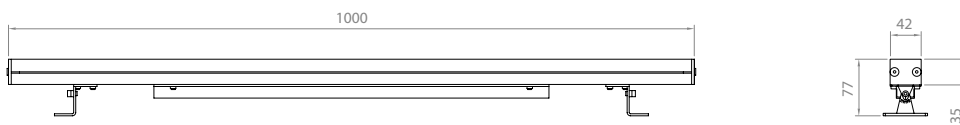
Reference example

VL-LN.40-R-300mm-8W-8-24-STD




Soft light effect with no gaps

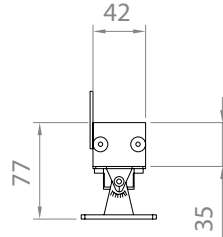
Dimensions



Accessories

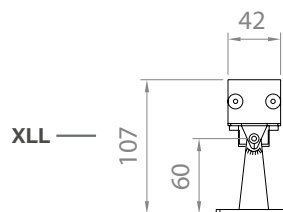
Code	Accessories
VL-LN.40	HC Honeycomb Grid VS Visor

HC — 

VS — 

Code	Accessories
VL-LN.40	XLL Extra long legs IO In&out cable with connectors *CBLX Special length cable

** Instead of X, put length of cable needed
Example: VL-LN40-CBL-10m*



LINNEA.30



IP66	IK09	CREE XP-G	RECYCLE
FAILURE RATE < 0,1% after 25,000h	LIFE TIME Tested over 50,000h	MIN -20°C MAX 55°C	CLASE I

LINNERS
LINNEA SERIES

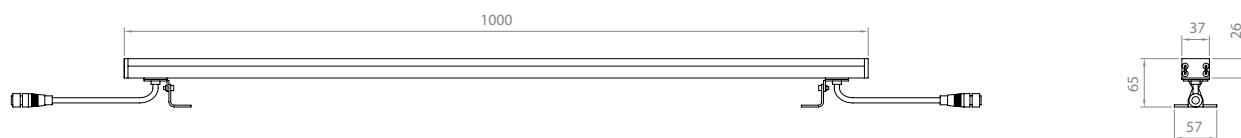
References

Code	Finish	Light Color	Lenght-Power	Lense		Voltage	Driver
VL-LN.30	LG Light grey RAL Any RAL color	White					
		W24 2400K	300mm-6W	20°	30°	24 24Vdc	STD ON/OFF
	W27 2700K	500mm-9W	45°	60°	R010 Remote 0-10V		
	W30 3000K	500mm-12W	25x45°		RD Remote Dali		
	W40 4000K	1000mm-18W	CAS Casambi				
	W60 6000K	1000mm-24W					
	Single Color (SC)						
	R Red	300mm-6W	20°	30°	24 24Vdc	STD ON/OFF	
	B Blue	500mm-9W	45°	60°		R010 Remote 0-10V	
	G Green	500mm-12W	25x45°			RD Remote Dali	
	A Amber	1000mm-18W	CAS Casambi				
		1000mm-24W					
	RGBW						
	RGBW3	300mm-6W	20°	30°	24 24Vdc	DMX	
	4 in 1 Chip	500mm-9W	45°	60°			
RGB+W3000K	500mm-12W	25x45°					
RGBW4	1000mm-18W						
4 in 1 Chip	1000mm-24W						
RGB+W4000K							

Reference example

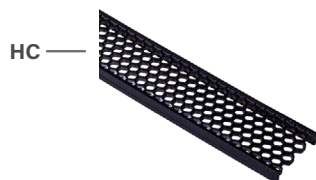
VL-LN.30-RGBW3-1000mm-24W-60-24-DMX

Dimensions



Accessories

Code	Accessories
VL-LN.30	HC Honeycomb Grid



Code	Accessories
VL-LN.30	IO In&out cable with connectors *CBLX Special length cable

** Instead of X, put length of cable needed
Example: VL-LN40-CBL-10m*

MAXLINE



IP66	IK09	CREE XP-G	RECYCLE
FAILURE RATE < 0,1% after 25,000h	LIFE TIME Tested over 50,000h	MIN -20°C MAX 55°C	CLASE I

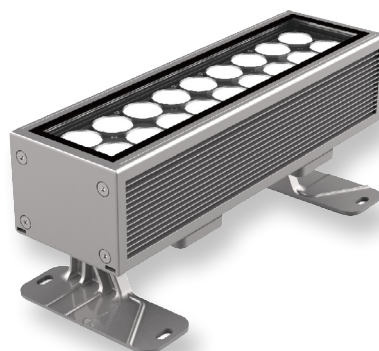
LINNERS
LINNEA SERIES

References

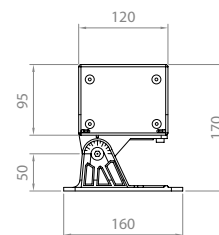
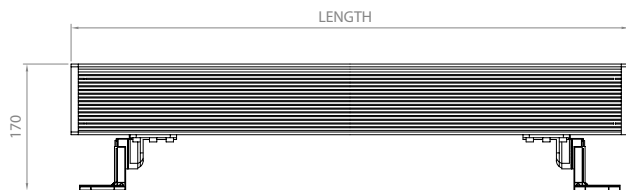
Code	Finish	Light Color	Lenght-Power	Lense		Voltage	Driver
VL-MXL	LG Light grey RAL Any RAL color	White					
		W24 2400K	300mm-80W	2,5°	6°	UNIV 100-264Vac	STD ON/OFF
	W27 2700K	400mm-120W	12°	20°	010 0-10V		
	W30 3000K	500mm-160W	30°	40°	DALI		
	W40 4000K	700mm-240W	60°	10x70°	CAS Casambi		
	W60 6000K	1000mm-300W	5x20°				
	Single Color (SC)						
	R Red	300mm - 80W	6°	12°	UNIV 100-264Vac	STD ON/OFF	
	B Blue	400mm - 120W	20°	30°		010 0-10V	
	G Green	500mm - 160W	40°	60°	DALI		
	A Amber	700mm - 240W	10x70°	5x20°	CAS Casambi		
		1000mm - 300W					
	RGBW						
	RGBW3	300mm-80W	15°	20°	UNIV 100-264Vac	DALI	
	4 in 1 Chip	400mm-120W	30°	60°		DMX	
RGB+W3000K	500mm-160W	10x30°	10x60°	CAS Casambi			
RGBW4	700mm-240W						
4 in 1 Chip	1000mm-300W						
RGB+W4000K							

Reference example

VL-MXL-W30-700mm-240W-20-UNIV-DALI



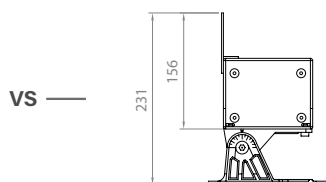
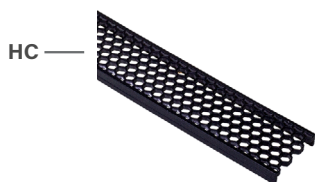
Dimensions



Accesories

Code	Accesories
------	------------

VL-MXL **HC** Honeycomb Grid
VS Visor



Code	Accesories
------	------------

VL-MXL **IO** In&out cable with connectors
***CBLX** Special length cable

** Instead of X, put length of cable needed
Example: VL-LN40-CBL-10m*

LINNEA.CURVE



IP66	IK09	CREE XP-G	RECYCLE
FAILURE RATE < 0,1% after 25,000h	LIFE TIME Tested over 50,000h	MIN -20°C MAX 55°C	CLASE I

LINNERS
LINNEA SERIES

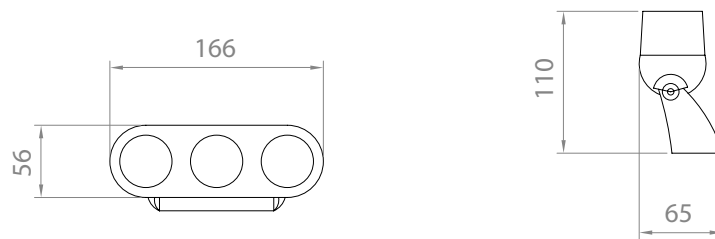
References

Code	Finish	Light Color	Power	Lense		Voltage	Driver
VL-LN.CU	LG Light grey RAL Any RAL color	White					
		W24 2400K	6W	6°	12°	UNIV 100-264Vac	STD ON/OFF
	W27 2700K	12W	20°	30°		010 0-10V	
	W30 3000K	15W	40°	60°	24 24Vdc	RD Remote Dali	
	W40 4000K		5x20°	10x70°		CAS Casambi	
	W60 6000K						
	Single Color (SC)						
	R Red	6W	6°	12°	UNIV 100-264Vac	STD ON/OFF	
	B Blue	12W	20°	30°		010 0-10V	
	G Green	15W	40°	60°	24 24Vdc	RD Remote Dali	
	A Amber		5x20°	10x70°		CAS Casambi	
	RGBW						
	RGBW3	12W	20°	40°	24 24Vdc	DMX	
	4 in 1 Chip	24W	60°	15x60°			
	RGB+W3000K		15x25°				
RGBW4							
4 in 1 Chip							
RGB+W4000K							

Reference example

VL-LN.CU-W40-12W-60-UNIV-STD

Dimensions



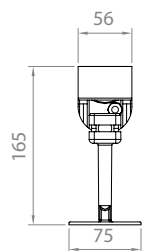
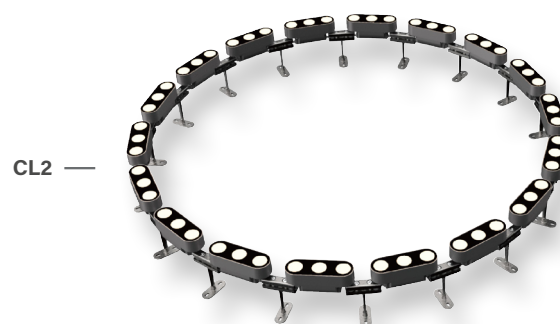
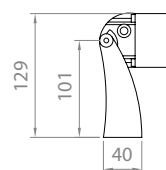
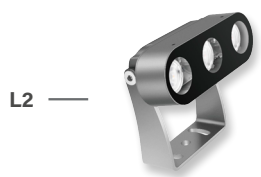
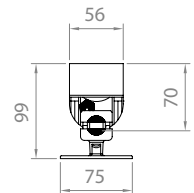
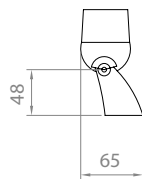
Accessories

Code	Accessories
------	-------------

VL-LN.CU

- *L1 Short support
- *L2 Long support
- *CL1 Connection short leg
- *CL2 Connection long leg
- *EL1 End short leg
- *EL2 End long leg
- *CBLX Special length cable

- * For individual mounting
- * For individual mounting
- * For continous line mounting - short intermediate connection leg
- * For continous line mounting - long intermediate connection leg
- * For continous line mounting - short end leg
- * For continous line mounting - long end leg
- * Instead of X, put length of cable needed
Example: VL-LN40-CBL-10m



LINNEA.TUBE



IP66	IK09	CREE XP-G	RECYCLE
FAILURE RATE < 0,1% after 25,000h	LIFE TIME Tested over 50,000h	MIN -20°C MAX 55°C	CLASE I
SP US	CE	RoHS	RoHS 2

LINNERS
LINNEA SERIES

References

Code	Type	Finish	Light Color	Power	Lense	Voltage	Driver
VL-LN.TUB	A No enclosure B Square short C Square long D Round	LG Light grey RAL Any RAL color	White				
			W24 2400K	6W	30° (Type A)	24 24Vdc	STD ON/OFF
			W27 2700K	10W	60° (Type A)		R010 Remote 0-10V
			W30 3000K	15W	120°		RD Remote DALI
			W40 4000K				CAS Casambi
			W60 6000K				
			Single Color (SC)				
			R Red	6W	30° (Type A)	24 24Vdc	STD ON/OFF
			B Blue	10W	60° (Type A)		R010 Remote 0-10V
			G Green	15W	120°		RD Remote DALI
			A Amber				CAS Casambi
			RGBW				
			RGBW3	6W	30° (Type A)	24 24Vdc	DMX
			4 in 1 Chip	10W	60° (Type A)		
			RGB+W3000K	15W	120°		
RGBW4							
4 in 1 Chip							
RGB+W4000K							

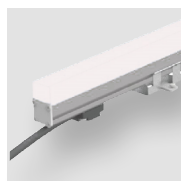
Reference example

VL-LN.TUB-B-LG-W24-10W-120-24-R010

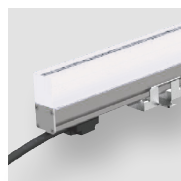
Variations



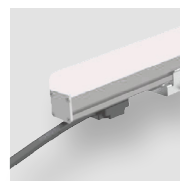
A
No enclosure



B
Square short

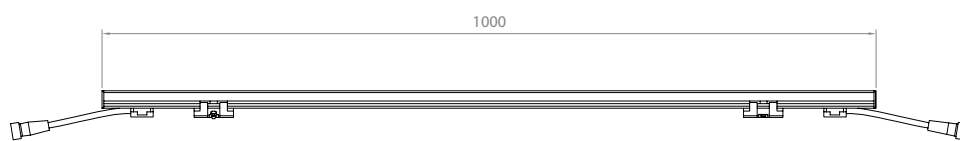


C
Square long

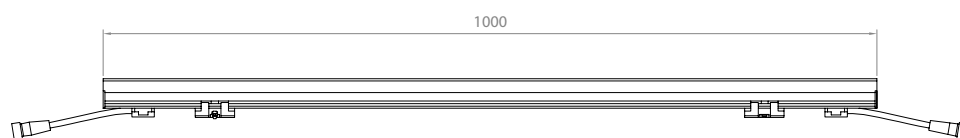
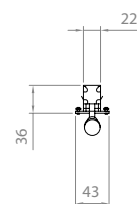


D
Round

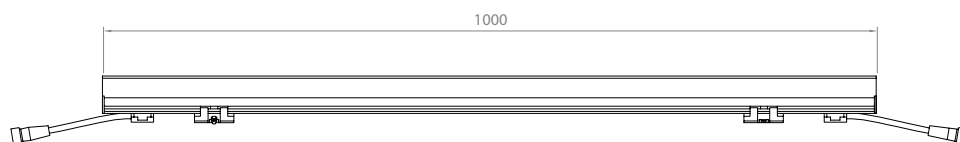
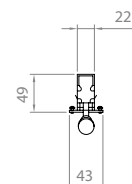
Dimensions



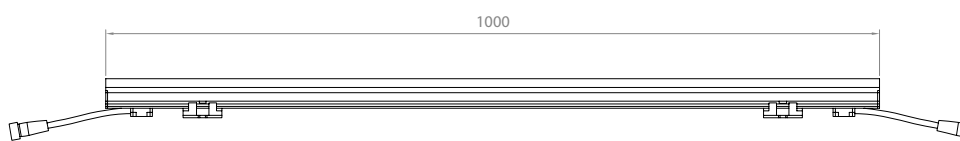
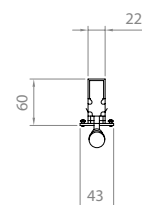
TYPE A



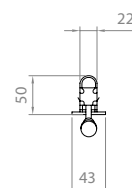
TYPE B



TYPE C



TYPE D



Accessories

Code	Accessories
------	-------------

VL-LN.TUB

IO In&out cable with connectors

***CBLX** Special length cable

** Instead of X, put length of cable needed*

Example: VL-LNTUBE-CBL-10m