



FOX.50



FOX.35



FOX.25



FOX.16



FOX.9



FOX.6



FOX.4

CIRCULAR PROJECTORS
FOX SERIES

FOX.50



IP66	IK09	CREE XP-G	RECYCLE
FAILURE RATE < 0,1% after 25,000h	LIFE TIME Tested over 50,000h	MIN -20°C MAX 55°C	CLASE I
SP US	CE	RoHS	RoHS 2

CIRCULAR PROJECTORS
FOX SERIES

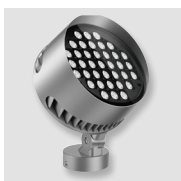
References

Code	Type	Finish	Light Color	Power	Lense		Voltage	Driver	
VL-F50	A Base B Base 2	LG Light grey	White						
		DK Dark grey	W24 2400K	190W	1,5° (190W)	2°	UNIV 100-264Vac	STD ON/OFF	
	WH White	W27 2700K	300W	4,5°	8°	010 0-10V			
	BK Black	W30 3000K	360W	12°	20°	DALI			
	RAL Any RAL color	W40 4000K		30°	40°	CAS Casambi			
		W60 6000K		60°	5x20°				
				10x70°					
				Single Color (SC)					
			R Red		360W	4,5°	8°	UNIV 100-264Vac	STD ON/OFF
			B Blue			12°	20°	010 0-10V	
			G Green			30°	40°	DALI	
			A Amber			60°	5x20°	CAS Casambi	
						10x70°			
				RGBW					
			RGBW3		300W	8°	15°	UNIV 100-264Vac	DALI
		4 in 1 Chip		360W	20°	30°		DMX	
		RGB+W3000K			60°	15x60°		CAS Casambi	
		RGBW4							
		4 in 1 Chip							
		RGB+W4000K							
		RGBW7							
		7 in 1 Chip							
		RGBWCLA							

Reference example

VL-F50-B-BK-RGB7-36W-8°-UNIV-DMX

Variations

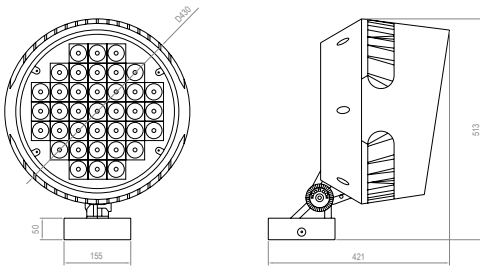


A
Base

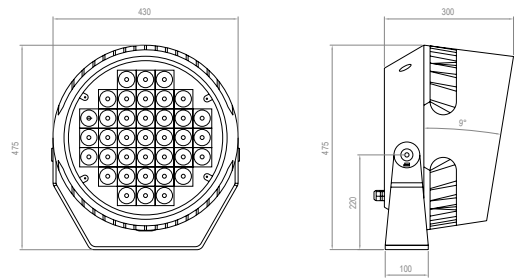


B
Base 2

Dimensions



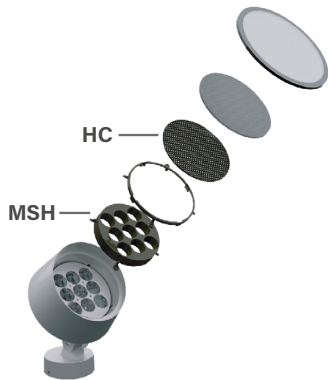
TYPE A



TYPE B

Accessories

Code	Accessories
VL-F50	HC Honeycomb Grid MSH Mesh



Code	Accessories
VL-F50	*CBLX Special length cable*

* Instead of X, put length of cable needed
Example: VL-F50-CBL-10m

FOX.35



IP66	IK09	CREE XP-G	RECYCLE
FAILURE RATE < 0,1% after 25,000h	LIFE TIME Tested over 50,000h	MIN -20°C MAX 55°C	CLASE I
SP US	CE	RoHS	RoHS 2

CIRCULAR PROJECTORS
FOX SERIES

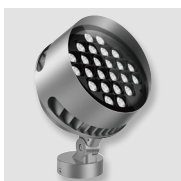
References

Code	Type	Finish	Light Color	Power	Lense		Voltage	Driver	
VL-F35	A Base B Base 2	LG Light grey	White						
		DK Dark grey	W24 2400K	120W	1,5° (120W)	2°	UNIV 100-264Vac	STD ON/OFF	
	WH White	W27 2700K	200W	4,5°	8°	010 0-10V			
	BK Black	W30 3000K	240W	12°	20°	DALI			
	RAL Any RAL color	W40 4000K		30°	40°	CAS Casambi			
		W60 6000K		60°	5x20°				
				10x70°					
				Single Color (SC)					
				R Red	240W	4,5°	8°	UNIV 100-264Vac	STD ON/OFF
				B Blue		12°	20°		010 0-10V
				G Green		30°	40°		DALI
				A Amber		60°	5x20°		CAS Casambi
				10x70°					
				RGBW					
				RGBW3	200W	8°	15°	UNIV 100-264Vac	DALI
			4 in 1 Chip	240W	20°	30°		DMX	
			RGB+W3000K		60°	15x60°		CAS Casambi	
			RGBW4						
			4 in 1 Chip						
			RGB+W4000K						
			RGBW7						
			7 in 1 Chip						
			RGBWCLA						

Reference example

VL-F35-B-BK-B-200W-10x70°-UNIV-010

Variations

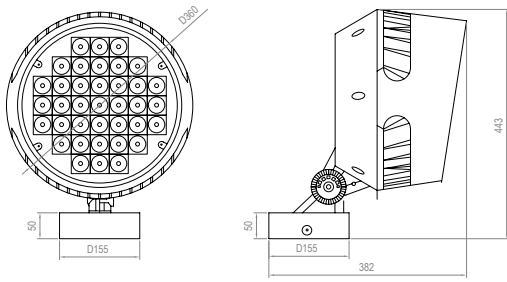


A
Base

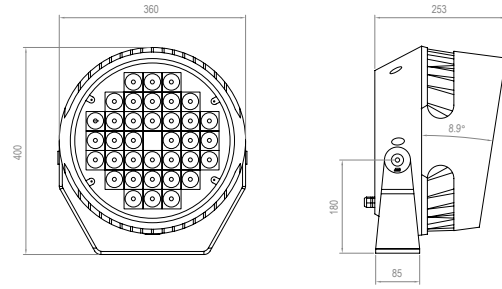


B
Base 2

Dimensions



TYPE A



TYPE B

Accessories

Code	Accessories
------	-------------

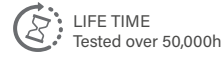
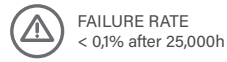
VL-F35 **HC** Honeycomb Grid
MSH Mesh



Code	Accessories
------	-------------

VL-F35 ***CBLX** Special length cable* * Instead of X, put length of cable needed
 Example: VL-F35-CBL-10m

FOX.25



CIRCULAR PROJECTORS
FOX SERIES

References

Code	Type	Finish	Light Color	Power	Lense		Voltage	Driver
VL-F25	A Base	LG Light grey	White					
	B Base 2	DK Dark grey	W24 2400K	70W	1,5° (70W)	2,5°	UNIV 100-264Vac	STD ON/OFF
	C Pole Arm	WH White	W27 2700K	85W	6°	12°		010 0-10V
		BK Black	W30 3000K	120W	20°	30°		DALI
	RAL Any RAL color	W40 4000K		40°	60°		CAS Casambi	
		W60 6000K		5x20°	10x70°			
		Single Color (SC)						
		R Red	85W	2,5°	6°	UNIV 100-264Vac	STD ON/OFF	
		B Blue	120W	12°	20°		010 0-10V	
		G Green		30°	40°		DALI	
		A Amber		60°	5x20°		CAS Casambi	
				10x70°				
	RGBW							
		RGBW3	150W	15°	20°	UNIV 100-264Vac	DALI	
		4 in 1 Chip		30°	60°	36 36Vdc	DMX	
	RGB+W3000K		15x60°			CAS Casambi		
	RGBW4							
	4 in 1 Chip							
	RGB+W4000K							
	RGBW7							
	7 in 1 Chip							
	RGBWCLA							

Reference example

VL-F25-C-DK-W60-120W-60°-UNIV-STD

Variations



A
Base

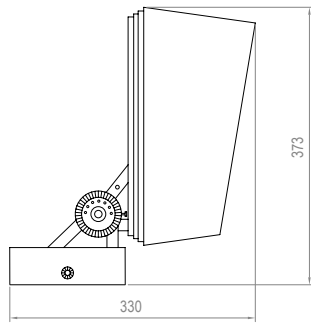
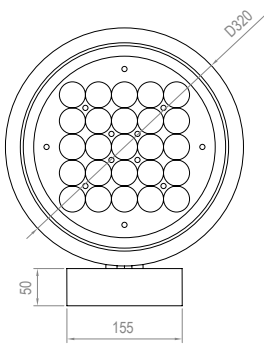


B
Base 2

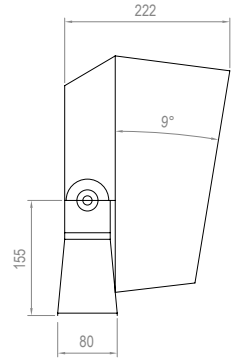
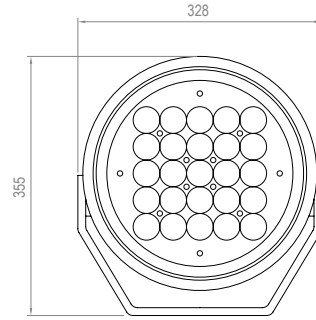


C
Pole Arm
D=45mm

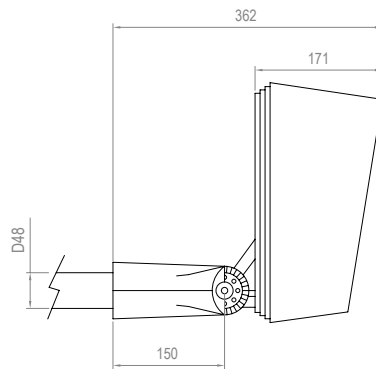
Dimensions



TYPE A



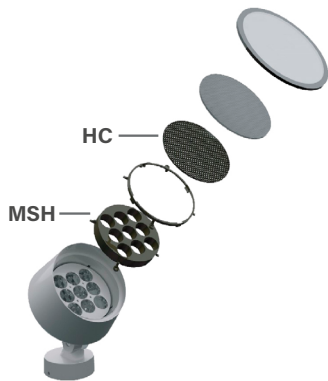
TYPE B



TYPE C

Accessories

Code	Accessories
VL-F25	HC Honeycomb Grid MSH Mesh

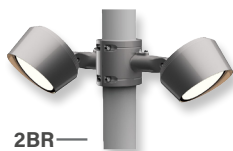
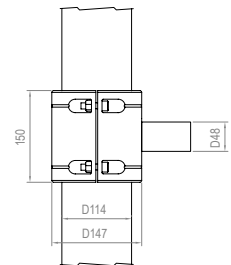


Code	Accessories
VL-F25	*1BR Braket for 1 projector *2BR Braket for 2 projector *CBLX Special length cable

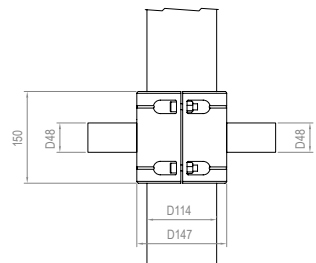
* Must be used with Type C
* Must be used with Type C
* Instead of X, put length of cable needed
Example: VL-F25-CBL-10m



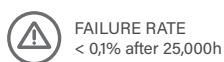
1BR



2BR



FOX.16



CIRCULAR PROJECTORS
FOX SERIES

References

Code	Type	Finish	Light Color	Power	Lense		Voltage	Driver	
VL-F16	A Base	LG Light grey	White						
	B Base 2	DK Dark grey	W24 2400K	40W	1,5° (40W)	2,5°	UNIV 100-264Vac	STD ON/OFF	
	C Pole Arm	WH White	W27 2700K	60W	6°	12°		24 24Vdc	010 0-10V
	D Pole mounted	BK Black	W30 3000K	75W	20°	30°	UNIV 100-264Vac		010 0-10V
	E Stripe mounted	RAL Any RAL color	W40 4000K		40°	60°		24 24Vdc	DALI
			W60 6000K		5x20°	10x70°			CAS Casambi
				Single Color (SC)					
				R Red	60W	2,5°	6°	UNIV 100-264Vac	STD ON/OFF
				B Blue	75W	12°	20°		24 24Vdc
				G Green		30°	40°	UNIV 100-264Vac	
				A Amber		60°	5x20°		24 24Vdc
						10x70°			
				RGBW					
				RGBW3	100W	15°	20°	UNIV 100-264Vac	DALI
				4 in 1 Chip		30°	60°		36 36Vdc
			RGB+W3000K		15x60°			CAS Casambi	
			RGBW4						
			4 in 1 Chip						
			RGB+W4000K						
			RGBW7						
			7 in 1 Chip						
			RGBWCLA						

Reference example

VL-F16-C-DK-W60-75W-20°-UNIV-STD

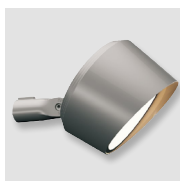
Variations



A
Base



B
Base 2



C
Pole Arm
D=45mm

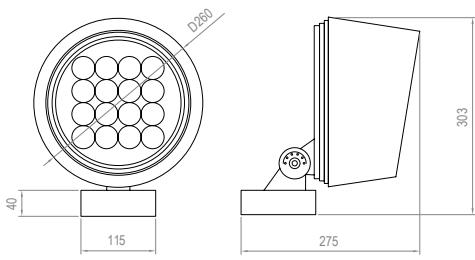


D
Pole mounted
D67-325mm

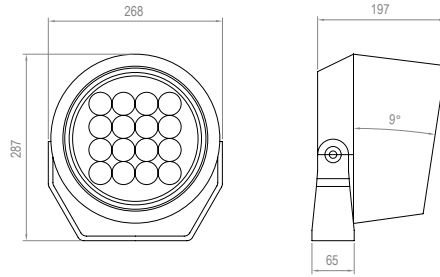


E
Stripe mounted

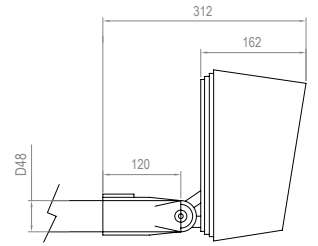
Dimensions



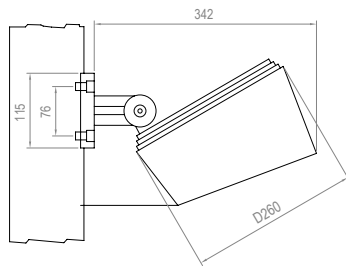
TYPE A



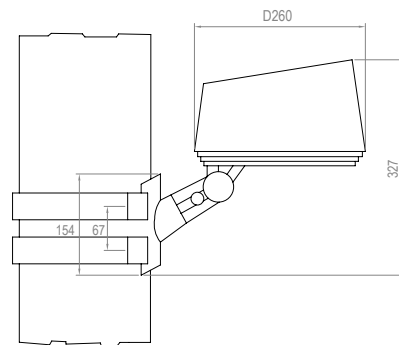
TYPE B



TYPE C



TYPE D

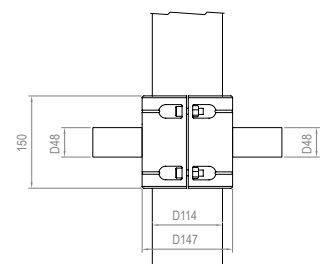
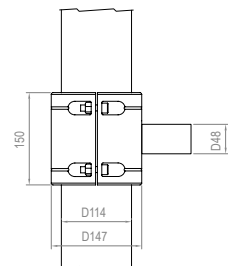


TYPE E

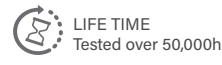
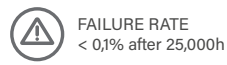
Accessories

Code	Accessories
VL-F16	<p>HC Honeycomb Grid</p> <p>MSH Mesh</p>

Code	Accessories
VL-F16	<p>*1BR Bracket for 1 projector</p> <p>*2BR Bracket for 2 projector</p> <p>*CBLX Special length cable</p> <p><i>* Must be used with Type C</i></p> <p><i>* Must be used with Type C</i></p> <p><i>* Instead of X, put length of cable needed</i></p> <p><i>Example: VL-F16-CBL-10m</i></p>



FOX.9



CIRCULAR PROJECTORS
FOX SERIES

References

Code	Type	Finish	Light Color	Power	Lense		Voltage	Driver	
VL-F9	A Base	LG Light grey	White						
	B Base 2	DK Dark grey	W24 2400K	30W	1,5° (30W)	2,5°	UNIV 100-264Vac	STD ON/OFF	
	C Pole Arm	WH White	W27 2700K	35W	6°	12°		010 0-10V	
	D Pole mounted	BK Black	W30 3000K	45W	20°	30°	24 24Vdc	DALI	
	E Stripe mounted	RAL Any RAL color	W40 4000K		40°	60°		CAS	
	F Nut		W60 6000K		5x20°	10x70°		CAS Casambi	
	Single Color (SC)								
	R Red		35W	2,5°	6°	UNIV 100-264Vac		STD ON/OFF	
	B Blue		45W	12°	20°	24 24Vdc		010 0-10V	
	G Green			30°	40°			DALI	
	A Amber			60°	5x20°			CAS Casambi	
				10x70°	10x70°				
	RGBW								
	RGBW3		60W	15°	20°	UNIV 100-264Vac		DALI	
	4 in 1 Chip			30°	60°	36 36Vdc		DMX	
RGB+W3000K			15x60°				CAS Casambi		
RGBW4									
4 in 1 Chip									
RGB+W4000K									
RGBW7									
7 in 1 Chip									
RGBWCLA									

Reference example

VL-F9-A-DK-W30-45W-2,5°-UNIV-DALI

Variations



A
Base



B
Base 2



C
Pole Arm
D=45mm



D
Pole mounted
D67-325mm

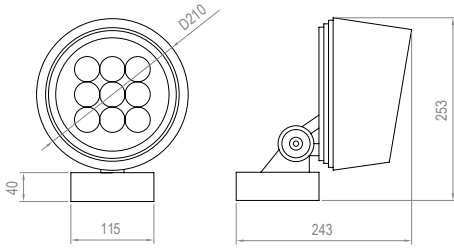


E
Stripe mounted

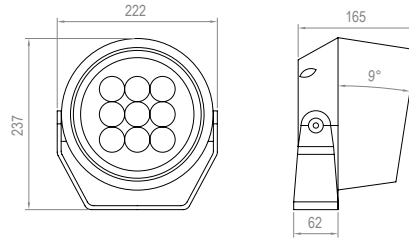


F
Nut (M10x1,5mm)

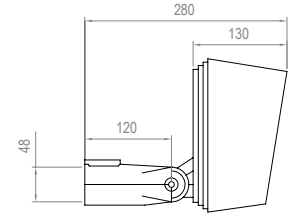
Dimensions



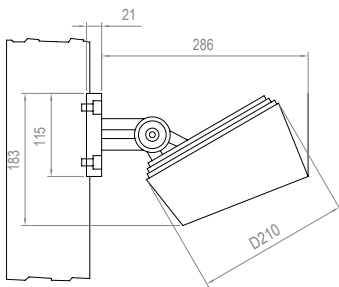
TYPE A



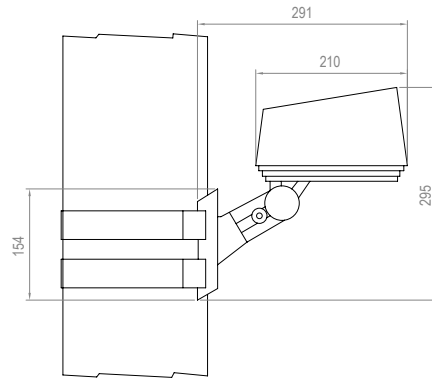
TYPE B



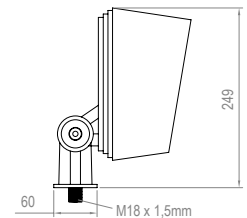
TYPE C



TYPE D



TYPE E

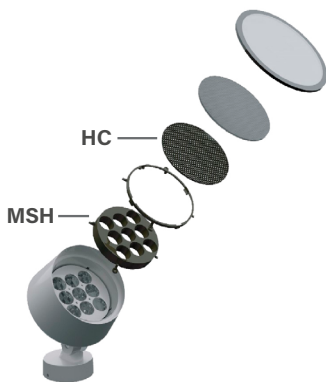


TYPE F

Accessories

Code	Accessories
------	-------------

VL-F9 **HC** Honeycomb Grid
MSH Mesh

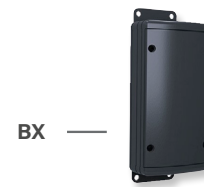
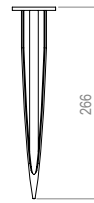


Code	Accessories
------	-------------

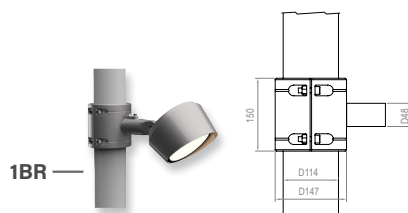
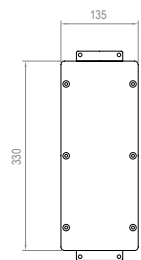
VL-F9 ***SPK** SPIKE ** Must be used with Type F*
** Must be used with Type C*
***1BR** Bracket for 1 projector ** Must be used with Type C*
***2BR** Bracket for 2 projector ** Must be used with Type F*
***BX** Elevated Box ** Instead of X, put length of cable needed*
***CBLX** Special length cable *Example: VL-F9-CBL-10m*



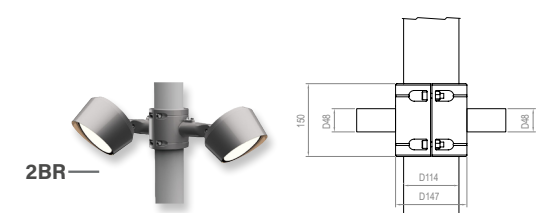
SPK



BX



1BR



2BR

FOX.6



IP66	IK09	CREE XP-G	RECYCLE
FAILURE RATE < 0,1% after 25,000h	LIFE TIME Tested over 50,000h	MIN -20°C MAX 55°C	CLASE I
SP US	RoHS	CE	RoHS 2

CIRCULAR PROJECTORS
FOX SERIES

References

Code	Type	Finish	Light Color	Power	Lense		Voltage	Driver
VL-F6	A Base	LG Light grey	White					
	B Base 2	DK Dark grey	W24 2400K	22W	1,5° (30W)	2,5°	UNIV 100-264Vac	STD ON/OFF
	C Pole Arm	WH White	W27 2700K	30W	6°	12°		010 0-10V
	D Pole mounted	BK Black	W30 3000K		20°	30°	24 24Vdc	DALI
	E Stripe mounted	RAL Any RAL color	W40 4000K		40°	60°		CAS Casambi
	F Nut		W60 6000K		5x20°	10x70°	CAS Casambi	
			Single Color (SC)					
			R Red	22W	2,5°	6°	UNIV 100-264Vac	STD ON/OFF
			B Blue	30W	12°	20°		010 0-10V
			G Green		30°	40°	24 24Vdc	DALI
			A Amber		60°	5x20°		CAS Casambi
					10x70°	10x70°		CAS Casambi
			RGBW					
			RGBW3	30W	8°	15°	UNIV 100-264Vac	DALI
			4 in 1 Chip	36W	20°	30°		DMX
		RGB+W3000K		60°	15x60°	24 24Vdc	CAS Casambi	
		RGBW4						
		4 in 1 Chip						
		RGB+W4000K						

Reference example

VL-F6-A-DK-RGBW3-36W-15°-24-DMX

Variations



A
Base



B
Base 2



C
Pole Arm
D=45mm



D
Pole mounted
D67-325mm

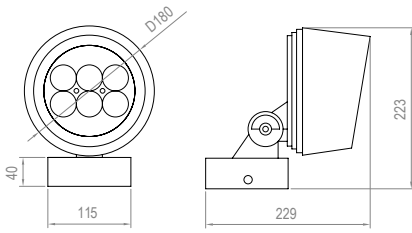


E
Stripe mounted

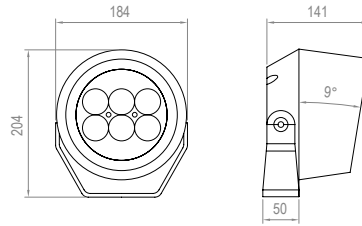


F
Nut (M10x1,5mm)

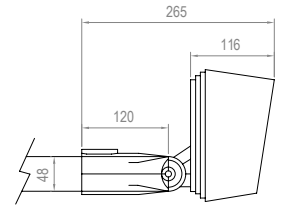
Dimensions



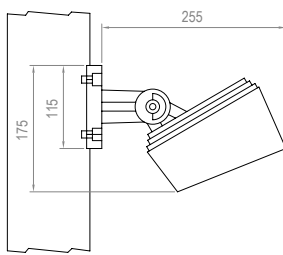
TYPE A



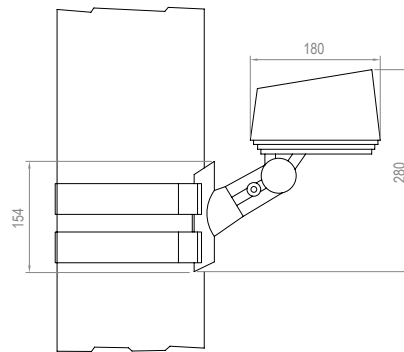
TYPE B



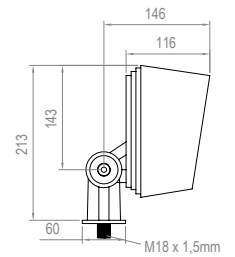
TYPE C



TYPE D



TYPE E

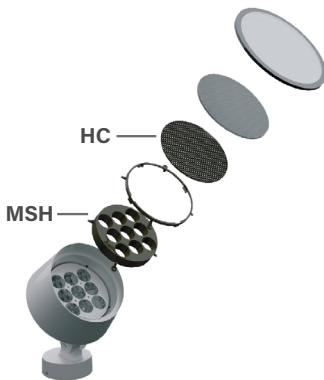


TYPE F

Accessories

Code	Accessories
------	-------------

VL-F6 **HC** Honeycomb Grid
MSH Mesh

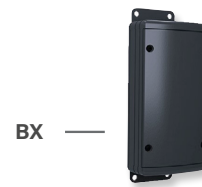
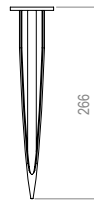


Code	Accessories
------	-------------

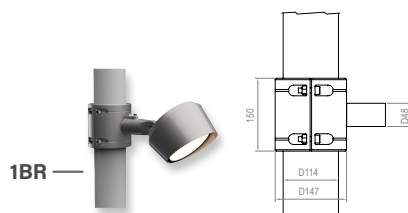
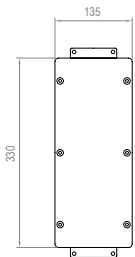
VL-F6 ***SPK** SPIKE ** Must be used with Type F*
** Must be used with Type C*
***1BR** Bracket for 1 projector ** Must be used with Type C*
***2BR** Bracket for 2 projector ** Must be used with Type F*
***BX** Elevated Box ** Instead of X, put length of cable needed*
***CBLX** Special length cable *Example: VL-F6-CBL-10m*



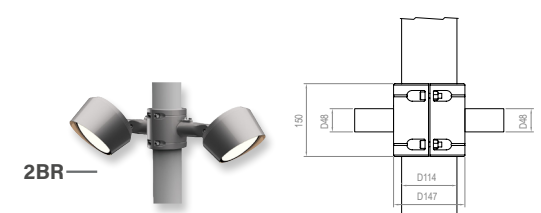
SPK



BX



1BR



2BR

FOX.4



IP66	IK09	CREE XP-G	RECYCLE
FAILURE RATE < 0,1% after 25,000h	LIFE TIME Tested over 50,000h	MIN -20°C MAX 55°C	CLASE I
SP US	RoHS	CE	RoHS 2

CIRCULAR PROJECTORS
FOX SERIES

References

Code	Type	Finish	Light Color	Power	Lense		Voltage	Driver	
VL-F4	A Base	LG Light grey	White						
	B Base 2	DK Dark grey	W24 2400K	10W	1,5° (10W)	2,5°	UNIV 100-264Vac	STD ON/OFF	
	C Pole Arm	WH White	W27 2700K	15W	6°	12°	24 24Vdc	010 0-10V	
	D Pole mounted	BK Black	W30 3000K	20W	20°	30°		DALI	
	E Stripe mounted	RAL Any RAL color	W40 4000K		40°	60°		CAS Casambi	
	F Nut		W60 6000K		5x20°	10x70°		CAS Casambi	
	Single Color (SC)								
		R Red			15W	2,5°	6°	UNIV 100-264Vac	STD ON/OFF
		B Blue			20W	12°	20°	24 24Vdc	010 0-10V
		G Green				30°	40°		DALI
		A Amber				60°	5x20°		CAS Casambi
	RGBW								
		RGBW3			20W	15°	20°	24 24Vdc	DALI
		4 in 1 Chip				30°	60°		DMX
		RGB+W3000K				15x60°			CAS Casambi
	RGBW4								
	4 in 1 Chip								
	RGB+W4000K								

Reference example

VL-F4-A-WH-W24-10W-1,5°-UNIV-STD

Variations



A
Base



B
Base 2



C
Pole Arm
D=45mm



D
Pole mounted
D67-325mm

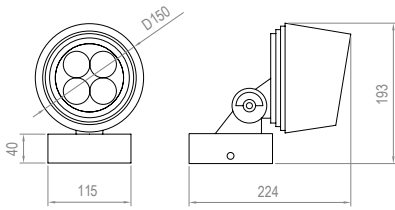


E
Stripe mounted

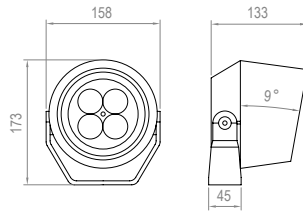


F
Nut (M10x1,5mm)

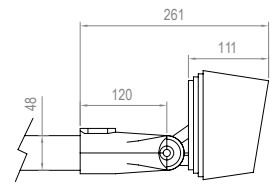
Dimensions



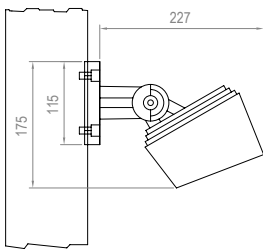
TYPE A



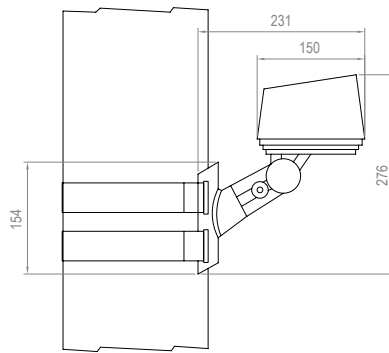
TYPE B



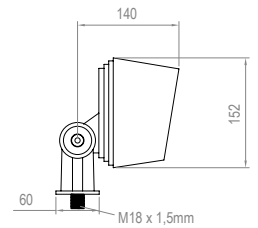
TYPE C



TYPE D



TYPE E

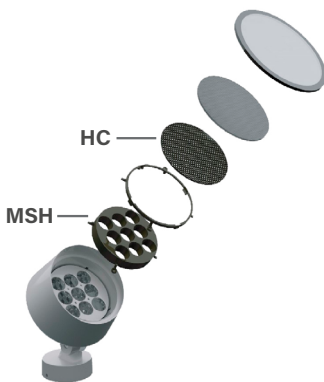


TYPE F

Accessories

Code	Accessories
------	-------------

VL-F4 **HC** Honeycomb Grid
MSH Mesh

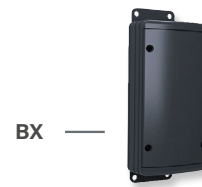
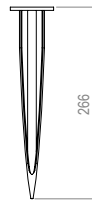


Code	Accessories
------	-------------

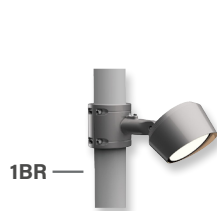
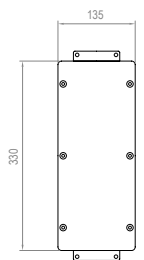
VL-F4 ***SPK** SPIKE ** Must be used with Type F*
***1BR** Bracket for 1 projector ** Must be used with Type C*
***2BR** Bracket for 2 projector ** Must be used with Type F*
***BX** Elevated Box ** Instead of X, put length of cable needed*
***CBLX** Special length cable *Example: VL-F4-CBL-10m*



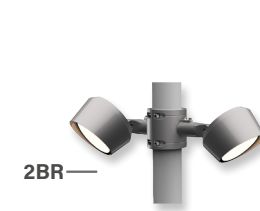
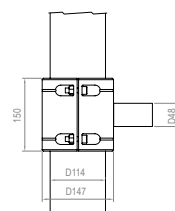
SPK



BX



1BR



2BR

