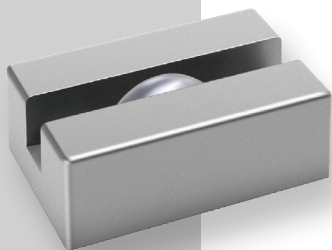


# GLIDE



IP67	IK10	CREE XP-G	RECYCLE
FAILURE RATE < 0,1% after 25,000h	LIFE TIME Tested over 50,000h	MIN -20°C MAX 55°C	CLASE I

**EFFECTS**  
**EFFECTS SERIES**

## References

Code	Light Color	Type-Power	Lense	Voltage	Driver
<b>VL-GLIDE</b>	<b>White</b>				
	<b>W24</b> 2400K	<b>Type A - 3W</b>	<b>2x120°</b>	<b>UNIV 100-264Vac</b> (Only for type A and B)	<b>STD ON/OFF</b>
	<b>W27</b> 2700K	<b>Type B - 9W</b>			<b>010 0-10V</b>
	<b>W30</b> 3000K	<b>Type C - 20W</b>			<b>DALI</b>
	<b>W40</b> 4000K				<b>24 24Vdc</b>
	<b>W60</b> 6000K				<b>CAS Casambi</b>
	<b>Single Color (SC)</b>				
	<b>R</b> Red	<b>Type A - 3W</b>	<b>2x120°</b>	<b>UNIV 100-264Vac</b> (Only for type A and B)	<b>STD ON/OFF</b>
	<b>B</b> Blue	<b>Type B - 9W</b>			<b>010 0-10V</b>
	<b>G</b> Green	<b>Type C - 20W</b>			<b>DALI</b>
	<b>A</b> Amber				<b>24 24Vdc</b>
					<b>CAS Casambi</b>
	<b>RGBW</b>				
	<b>RGBW3</b>	<b>Type A - 3W</b>	<b>2x120°</b>	<b>24 24Vdc</b>	<b>DMX</b>
	4 in 1 Chip	<b>Type B - 9W</b>			
RGB+W3000K	<b>Type C - 20W</b>				
<b>RGBW4</b>					
4 in 1 Chip					
RGB+W4000K					

Reference example

VL-GLIDE-W30-Type A-3W-2x120-DALI

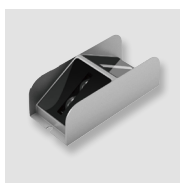
## Variations



**TYPE A**

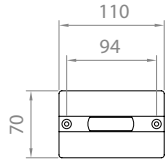


**TYPE B**

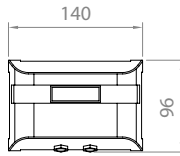


**TYPE C**

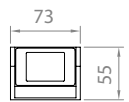
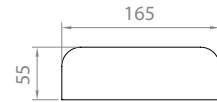
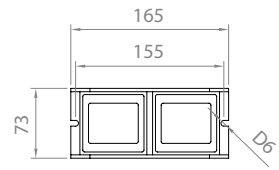
# Dimensions



**TYPE A**



**TYPE B**



**TYPE C**