

# UGN



IP67	IK10	CREE XP-G	RECYCLE
FAILURE RATE < 0,1% after 25,000h	LIFE TIME Tested over 50,000h	MIN -20°C MAX 55°C	CLASE I
SP US	RoHS	CE	RoHS 2

**UNDERGROUND  
UNDERGROUND SERIES**

## References

Code	Light Color	Size-Power	Lense		Voltage	Driver
<b>VL-UGN</b>	<b>White</b>					
	<b>W24</b> 2400K	<b>Size A-3,5W</b>	<b>8°</b>	<b>12°</b>	<b>UNIV</b> 100-264Vac	<b>STD</b> ON/OFF
	<b>W27</b> 2700K	<b>Size A-6W</b>	<b>20°</b>	<b>30°</b>	<b>12</b> 12Vdc	<b>010</b> 0-10V
	<b>W30</b> 3000K	<b>Size B-7W</b>	<b>45°</b>	<b>60°</b>		<b>DALI</b>
	<b>W40</b> 4000K	<b>Size B-12W</b>	<b>15x30°</b>	<b>10x60°</b>		<b>CAS</b> Casambi
	<b>W60</b> 6000K	<b>Size C-11W</b>				
		<b>Size C-16W</b>				
		<b>Size D-14W</b>				
		<b>Size D-22W</b>				
		<b>Size E-21W</b>				
		<b>Size E-30W</b>				
		<b>Size E-40W</b>				
		<b>Size F-56W</b>				
		<b>Size F-70W</b>				
	<b>Single Color (SC)</b>					
	<b>R</b> Red	<b>Size A-3,5W</b>	<b>8°</b>	<b>12°</b>	<b>UNIV</b> 100-264Vac	<b>STD</b> ON/OFF
	<b>B</b> Blue	<b>Size A-6W</b>	<b>20°</b>	<b>30°</b>	<b>12</b> 12Vdc	<b>010</b> 0-10V
	<b>G</b> Green	<b>Size B-7W</b>	<b>45°</b>	<b>60°</b>		<b>DALI</b>
	<b>A</b> Amber	<b>Size B-12W</b>	<b>15x30°</b>	<b>10x60°</b>		<b>CAS</b> Casambi
		<b>Size C-11W</b>				
		<b>Size C-16W</b>				
		<b>Size D-14W</b>				
		<b>Size D-22W</b>				
		<b>Size E-21W</b>				
		<b>Size E-30W</b>				
		<b>Size E-40W</b>				
		<b>Size F-56W</b>				
		<b>Size F-70W</b>				
	<b>RGBW</b>					
	<b>RGBW3</b>	<b>Size E-72W</b>	<b>15°</b>	<b>20°</b>	<b>UNIV</b> 100-264Vac	<b>DMX</b>
	4 in 1 Chip		<b>30°</b>	<b>60°</b>	<b>24</b> 24Vdc	
	RGB+W3000K		<b>15x60°</b>			
	<b>RGBW4</b>					
	4 in 1 Chip					
	RGB+W4000K					

Reference example

VL-UGN-B-Size E-40W-30 -UNIV-STD

## Variations



**SIZE A**  
D=110mm

**SIZE B**  
D=130mm

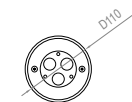
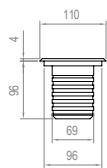
**SIZE C**  
D=150mm

**SIZE D**  
D=210mm

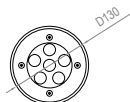
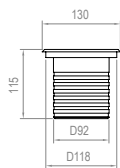
**SIZE E**  
D=260mm

**SIZE F**  
D=330mm

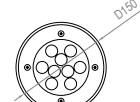
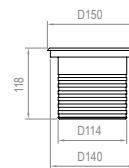
## Dimensions



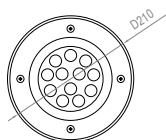
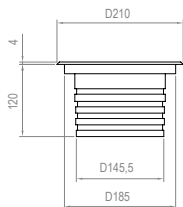
**SIZE A**



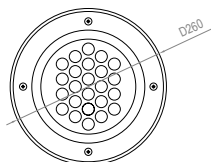
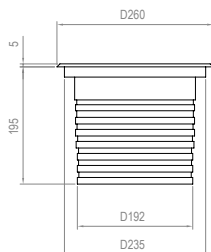
**SIZE B**



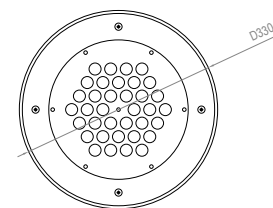
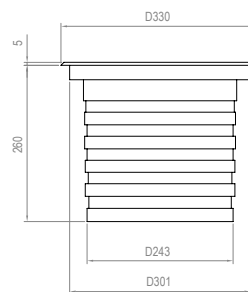
**SIZE C**



**SIZE D**



**SIZE E**



**SIZE F**

## Accessories

Aluminum recessed box is always included with the projector

Code	Accessories
------	-------------

**VL-UGN**      **HC** Honeycomb Grid  
**MSH** Mesh

**HC** —



**MSH** —



Code	Accessories
------	-------------

**VL-UGN**      **\*CBLX** Special length cable

*\* Instead of X, put length of cable needed  
Example: VL-UGN-CBL-10m*