

# UGO



IP67



IK10



CREE XP-G



RECYCLE



FAILURE RATE  
< 0,1% after 25,000h



LIFE TIME  
Tested over 50,000h



MIN -20°C  
MAX 55°C



CLASE I



UNDERGROUND  
**UNDERGROUND SERIES**

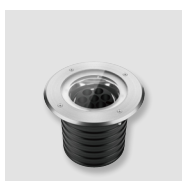
## References

Code	Light Color	Size-Power	Lense		Voltage	Driver
VL-UGO	<b>White</b>					
	W24 2400K	Size A-16W	6°	8°	UNIV 100-264Vac	STD ON/OFF
	W27 2700K	Size B-14W	12°	20°	24 24Vdc	010 0-10V
	W30 3000K	Size B-32W	30°	40°		DALI
	W40 4000K	Size C-42W	60°	5x20°		DALI
	W60 6000K	Size C-60W	10x70°			CAS Casambi
	<b>Single Color (SC)</b>					
	R Red	Size A-16W	6°	8°	UNIV 100-264Vac	STD ON/OFF
	B Blue	Size B-14W	12°	20°	24 24Vdc	010 0-10V
	G Green	Size B-32W	30°	40°		DALI
	A Amber	Size C-42W	60°	5x20°		DALI
		Size C-60W	10x70°			CAS Casambi
	<b>RGBW</b>					
	RGBW3	Size C-100W	15°	20°	UNIV 100-264Vac	DMX
	4 in 1 Chip		30°	60°	24 24Vdc	
RGB+W3000K		15x60°				
RGBW4						
4 in 1 Chip						
RGB+W4000K						

Reference example

VL-UGO-W30-Size B-32W-10x70 -UNIV-DALI

## Variations



**SIZE A**  
220x220mm

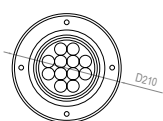
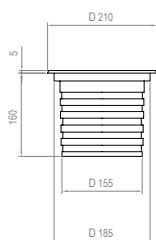


**SIZE B**  
270x270mm

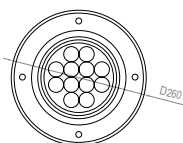
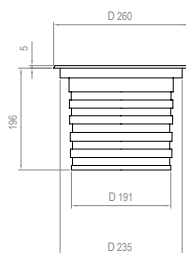


**SIZE C**  
320x320mm

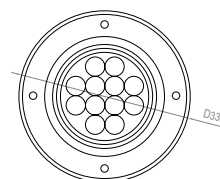
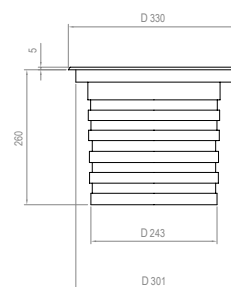
## Dimensions



**SIZE A**



**SIZE B**

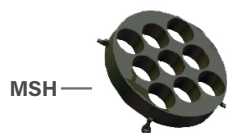
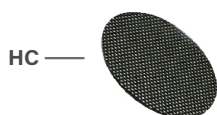


**SIZE C**

## Accessories

Stainless steel recessed box is always included with the projector

Code	Accessories
VL-UGO	HC Honeycomb Grid MSH Mesh



Code	Accessories
VL-UGO	*CBLX Special length cable <i>* Instead of X, put length of cable needed Example: VL-UGO-CBL-10m</i>