

# LINNEA.TUBE



IP66	IK09	CREE XP-G	RECYCLE
FAILURE RATE < 0,1% after 25,000h	LIFE TIME Tested over 50,000h	MIN -20°C MAX 55°C	CLASE I
SP US	CE	RoHS	RoHS 2

LINNERS  
**LINNEA SERIES**

## References

Code	Type	Finish	Light Color	Power	Lense	Voltage	Driver
<b>VL-LN.TUB</b>	<b>A</b> No enclosure <b>B</b> Square short <b>C</b> Square long <b>D</b> Round	<b>LG</b> Light grey <b>RAL</b> Any RAL color	<b>White</b>				
			<b>W24</b> 2400K	<b>6W</b>	<b>30°</b> (Type A)	<b>24</b> 24Vdc	<b>STD</b> ON/OFF
			<b>W27</b> 2700K	<b>10W</b>	<b>60°</b> (Type A)		<b>R010</b> Remote 0-10V
			<b>W30</b> 3000K	<b>15W</b>	<b>120°</b>		<b>RD</b> Remote DALI
			<b>W40</b> 4000K				<b>CAS</b> Casambi
			<b>W60</b> 6000K				
			<b>Single Color (SC)</b>				
			<b>R</b> Red	<b>6W</b>	<b>30°</b> (Type A)	<b>24</b> 24Vdc	<b>STD</b> ON/OFF
			<b>B</b> Blue	<b>10W</b>	<b>60°</b> (Type A)		<b>R010</b> Remote 0-10V
			<b>G</b> Green	<b>15W</b>	<b>120°</b>		<b>RD</b> Remote DALI
			<b>A</b> Amber				<b>CAS</b> Casambi
			<b>RGBW</b>				
			<b>RGBW3</b>	<b>6W</b>	<b>30°</b> (Type A)	<b>24</b> 24Vdc	<b>DMX</b>
			4 in 1 Chip	<b>10W</b>	<b>60°</b> (Type A)		
			RGB+W3000K	<b>15W</b>	<b>120°</b>		
<b>RGBW4</b>							
4 in 1 Chip							
RGB+W4000K							

Reference example

VL-LN.TUB-B-LG-W24-10W-120-24-R010

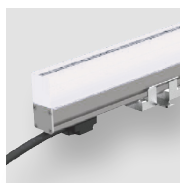
## Variations



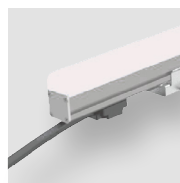
**A**  
No enclosure



**B**  
Square short

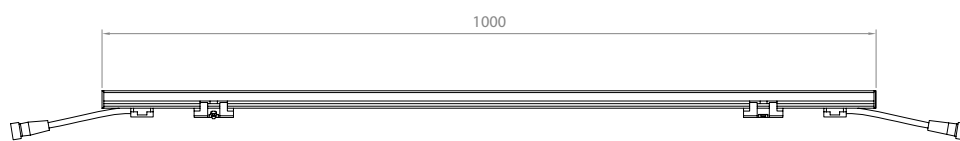


**C**  
Square long

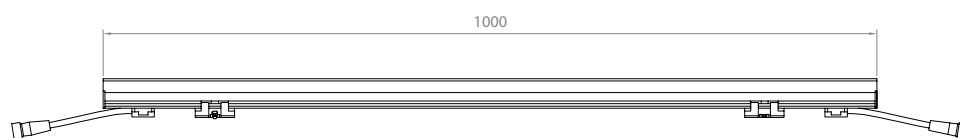
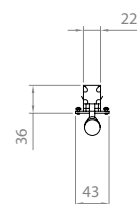


**D**  
Round

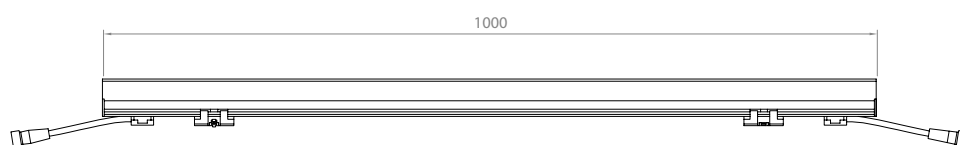
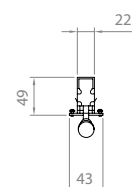
## Dimensions



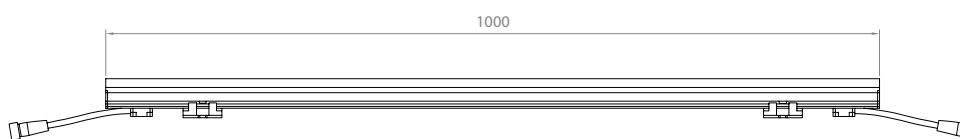
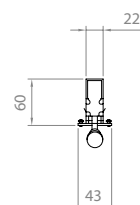
**TYPE A**



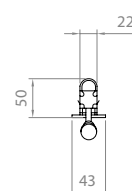
**TYPE B**



**TYPE C**



**TYPE D**



## Accessories

Code	Accessories
------	-------------

**VL-LN.TUB**

**IO** In&out cable with connectors

**\*CBLX** Special length cable

*\* Instead of X, put length of cable needed*

*Example: VL-LNTUBE-CBL-10m*