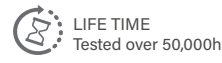
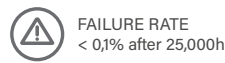


# KUBO.9



RECTANGULAR PROJECTORS  
**KUBO SERIES**

## References

Code	Type	Finish	Light Color	Power	Lense		Voltage	Driver	
<b>VL-KUB9</b>	<b>A</b> Base	<b>LG</b> Light grey	<b>White</b>						
	<b>B</b> Base 2	<b>DK</b> Dark grey	<b>W24</b> 2400K	<b>45W</b>	<b>2°</b>	<b>4,5°</b>	<b>UNIV</b> 100-264Vac	<b>STD</b> ON/OFF	
	<b>C</b> Pole Arm	<b>WH</b> White	<b>W27</b> 2700K		<b>8°</b>	<b>12°</b>			
	<b>D</b> Pole mounted	<b>BK</b> Black	<b>W30</b> 3000K		<b>20°</b>	<b>30°</b>			
	<b>E</b> Stripe mounted	<b>RAL</b> Any RAL color	<b>W40</b> 4000K		<b>40°</b>	<b>60°</b>	<b>24</b> 24Vdc	<b>DALI</b>	
	<b>F</b> Nut		<b>W60</b> 6000K		<b>5x20°</b>	<b>10x70°</b>		<b>CAS</b> Casambi	
						<b>ASYM</b>			
				<b>Single Color (SC)</b>					
				<b>R</b> Red	<b>45W</b>	<b>4,5°</b>	<b>8°</b>	<b>UNIV</b> 100-264Vac	<b>STD</b> ON/OFF
				<b>B</b> Blue		<b>12°</b>	<b>20°</b>		
				<b>G</b> Green		<b>30°</b>	<b>40°</b>		
				<b>A</b> Amber		<b>60°</b>	<b>5x20°</b>		
						<b>10x70°</b>		<b>DALI</b>	
								<b>CAS</b> Casambi	
				<b>RGBW</b>					
			<b>RGBW3</b>	<b>60W</b>	<b>15°</b>	<b>20°</b>	<b>UNIV</b> 100-264Vac	<b>DALI</b>	
			4 in 1 Chip		<b>30°</b>	<b>60°</b>			
			RGB+W3000K		<b>15x60°</b>				
			<b>RGBW4</b>				<b>36</b> 36Vdc		
			4 in 1 Chip					<b>DMX</b>	
			RGB+W4000K					<b>CAS</b> Casambi	

Reference example

VL-KUB9-A-DK-W30-45W-2,5°-UNIV-DALI

## Variations



**A**  
Base



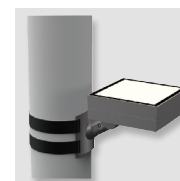
**B**  
Base 2



**C**  
Pole Arm  
D=45mm



**D**  
Pole mounted  
D67-325mm

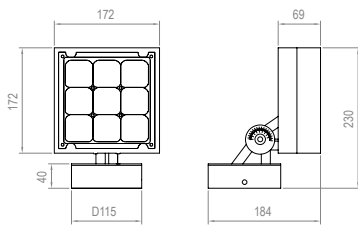


**E**  
Stripe mounted

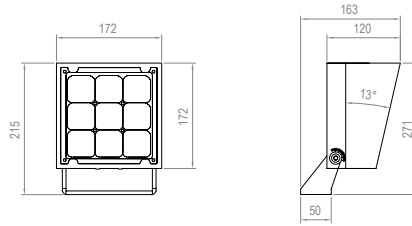


**F**  
Nut (M10x1,5mm)

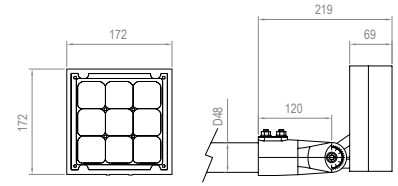
## Dimensions



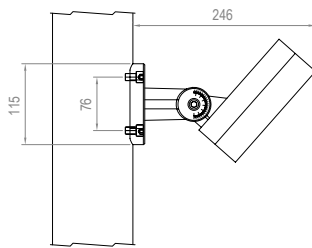
**TYPE A**



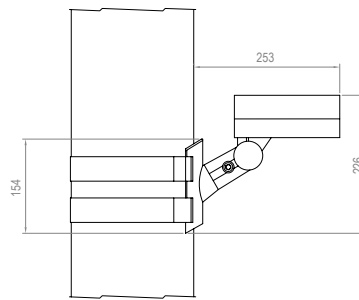
**TYPE B**



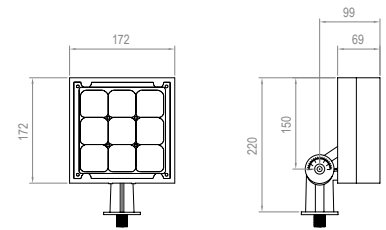
**TYPE C**



**TYPE D**



**TYPE E**



**TYPE F**

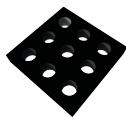
## Accessories

Code	Accessories
VL-KUB9	HC Honeycomb Grid MSH Mesh

HC



MSH



Code	Accessories
VL-KUB9	SHD Shields *SPK SPIKE *1BR Bracket for 1 projector *2BR Bracket for 2 projector *BX Elevated Box *CBLX Special length cable

*\* Must be used with Type F  
\* Must be used with Type C  
\* Must be used with Type C  
\* Must be used with Type F  
\* Instead of X, put length of cable needed  
Example: VL-KUB9-CBL-10m*

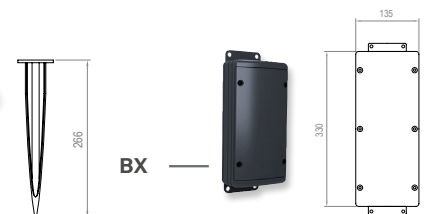
SHD



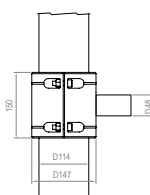
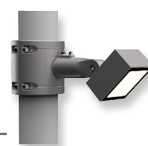
SPK



BX



1BR



2BR

