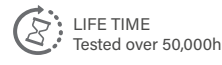
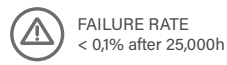


# FOX.4



CIRCULAR PROJECTORS  
**FOX SERIES**

## References

Code	Type	Finish	Light Color	Power	Lense		Voltage	Driver	
VL-F4	A Base	LG Light grey	<b>White</b>						
	B Base 2	DK Dark grey	W24 2400K	10W	1,5° (10W)	2,5°	UNIV 100-264Vac	STD ON/OFF	
	C Pole Arm	WH White	W27 2700K	15W	6°	12°		010 0-10V	
	D Pole mounted	BK Black	W30 3000K	20W	20°	30°	24 24Vdc	DALI	
	E Stripe mounted	RAL Any RAL color	W40 4000K		40°	60°		CAS Casambi	
	F Nut		W60 6000K		5x20°	10x70°			
	<b>Single Color (SC)</b>								
	R Red			15W	2,5°	6°	UNIV 100-264Vac	STD ON/OFF	
	B Blue			20W	12°	20°		010 0-10V	
	G Green				30°	40°	24 24Vdc	DALI	
	A Amber				60°	5x20°		CAS Casambi	
	<b>RGBW</b>								
RGBW3			20W	15°	20°	24 24Vdc	DALI		
4 in 1 Chip				30°	60°		DMX		
RGB+W3000K				15x60°			CAS Casambi		
RGBW4									
4 in 1 Chip									
RGB+W4000K									

Reference example

VL-F4-A-WH-W24-10W-1,5°-UNIV-STD

## Variations



**A**  
Base



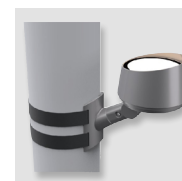
**B**  
Base 2



**C**  
Pole Arm  
D=45mm



**D**  
Pole mounted  
D67-325mm

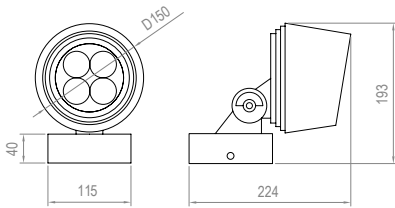


**E**  
Stripe mounted

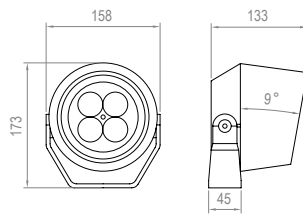


**F**  
Nut (M10x1,5mm)

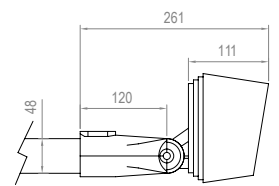
## Dimensions



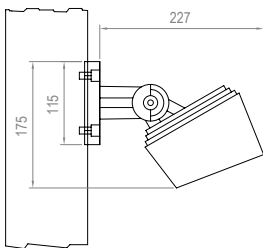
**TYPE A**



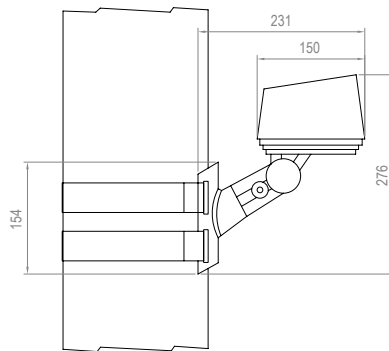
**TYPE B**



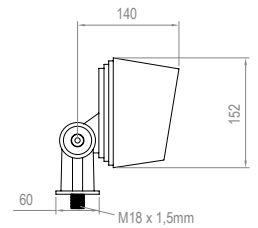
**TYPE C**



**TYPE D**



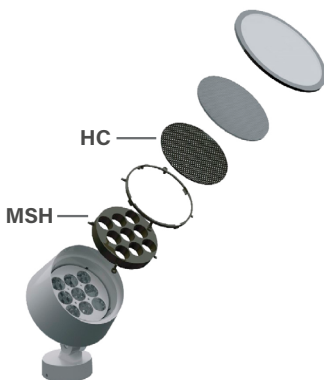
**TYPE E**



**TYPE F**

## Accessories

Code	Accessories
VL-F4	HC Honeycomb Grid MSH Mesh

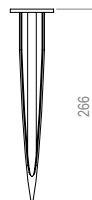


Code	Accessories
VL-F4	*SPK SPIKE *1BR Bracket for 1 projector *2BR Bracket for 2 projector *BX Elevated Box *CBLX Special length cable

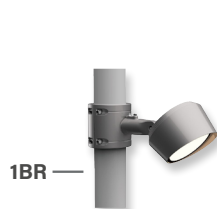
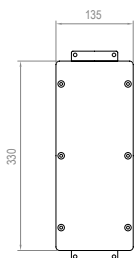
\* Must be used with Type F  
\* Must be used with Type C  
\* Must be used with Type F  
\* Instead of X, put length of cable needed  
Example: VL-F4-CBL-10m



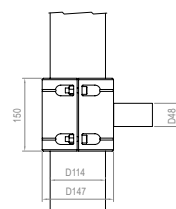
**SPK**



**BX**



**1BR**



**2BR**

