

FOX.35



IP66	IK09	CREE XP-G	RECYCLE
FAILURE RATE < 0,1% after 25,000h	LIFE TIME Tested over 50,000h	MIN -20°C MAX 55°C	CLASE I
SP US	CE	RoHS	RoHS 2

CIRCULAR PROJECTORS
FOX SERIES

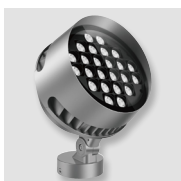
References

Code	Type	Finish	Light Color	Power	Lense		Voltage	Driver	
VL-F35	A Base B Base 2	LG Light grey	White						
		DK Dark grey	W24 2400K	120W	1,5° (120W)	2°	UNIV 100-264Vac	STD ON/OFF	
	WH White	W27 2700K	200W	4,5°	8°	010 0-10V			
	BK Black	W30 3000K	240W	12°	20°	DALI			
	RAL Any RAL color	W40 4000K		30°	40°	CAS Casambi			
		W60 6000K		60°	5x20°				
				10x70°					
				Single Color (SC)					
				R Red	240W	4,5°	8°	UNIV 100-264Vac	STD ON/OFF
				B Blue		12°	20°		010 0-10V
				G Green		30°	40°		DALI
				A Amber		60°	5x20°		CAS Casambi
				10x70°					
				RGBW					
				RGBW3	200W	8°	15°	UNIV 100-264Vac	DALI
			4 in 1 Chip	240W	20°	30°		DMX	
			RGB+W3000K		60°	15x60°		CAS Casambi	
			RGBW4						
			4 in 1 Chip						
			RGB+W4000K						
			RGBW7						
			7 in 1 Chip						
			RGBWCLA						

Reference example

VL-F35-B-BK-B-200W-10x70°-UNIV-010

Variations

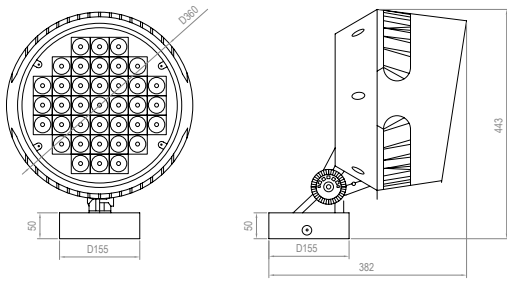


A
Base

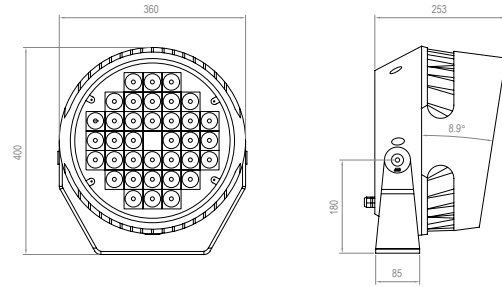


B
Base 2

Dimensions



TYPE A

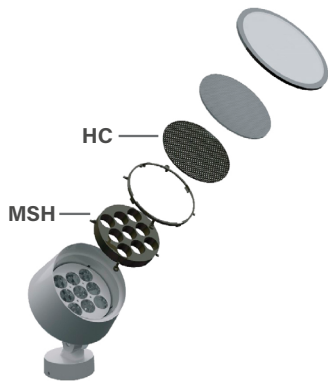


TYPE B

Accessories

Code	Accessories
------	-------------

VL-F35 HC Honeycomb Grid
MSH Mesh



Code	Accessories
------	-------------

VL-F35 *CBLX Special length cable* * Instead of X, put length of cable needed
Example: VL-F35-CBL-10m