

# SHELL.1



IP66	IK09	CREE XP-G	RECYCLE
FAILURE RATE < 0,1% after 25,000h	LIFE TIME Tested over 50,000h	MIN -20°C MAX 55°C	CLASE I
SP US	RoHS	CE	RoHS 2

**CIRCULAR PROJECTORS  
SHELL SERIES**

## References

Code	Type	Finish	Light Color	Power	Lense		Voltage	Driver	
VL-SH1	A Base	LG Light grey	<b>White</b>						
	B Base 2	DK Dark grey	W24 2400K	10W	2,5°	8°	UNIV 100-264Vac	STD ON/OFF	
	D Pole mounted	WH White	W27 2700K		15°	20°		24 24Vdc	R010 Remote 0-10V
	F Nut	BK Black	W30 3000K		30°	40°	RD Remote DALI		
		RAL Any RAL color	W40 4000K		60°	5x20°	RCAS Remote Casambi		
			W60 6000K		10x70°				
				<b>White -COB Led module</b>					
			W30 300K	16W	15°	24°	UNIV 100-264Vac	R010 Remote 0-10V	
			W40 400K		36°	50°		RD Remote DALI	
								RCAS Remote Casambi	
				<b>Single Color (SC)</b>					
			R Red	10W	3°	8°	UNIV 100-264Vac	STD ON/OFF	
			B Blue		12°	20°	24 24Vdc	R010 Remote 0-10V	
			G Green		30°	40°		RD Remote DALI	
			A Amber		60°	5x20°		RCAS Remote Casambi	
				10x70°					
			<b>RGBW</b>						
		RGBW3	8W	15°	20°	24 24Vdc	RD Remote DALI		
		4 in 1 Chip		30°	60°		DMX		
		RGB+W3000K		15x60°			RCAS Remote Casambi		
		RGBW4							
		4 in 1 Chip							
		RGB+W4000K							

Reference example

VL-SH1-A-WH-W24-10W-60°-UNIV-STD

## Variations



**A**  
Base



**B**  
Base 2

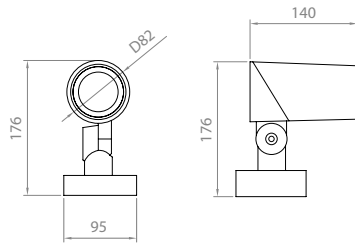


**D**  
Pole mounted  
D67-325mm

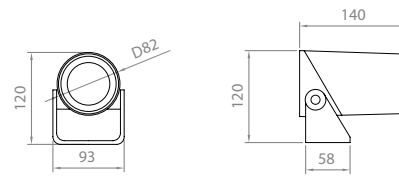


**F**  
Nut (M10x1,5mm)

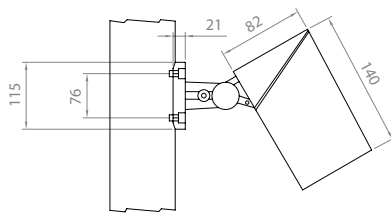
## Dimensions



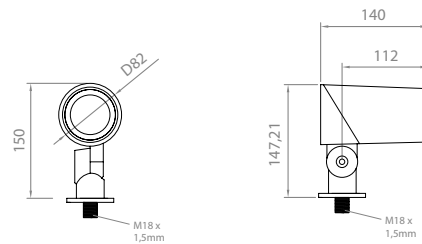
**TYPE A**



**TYPE B**



**TYPE D**



**TYPE F**

## Accessories

Code	Accessories
------	-------------

**VL-SH1**  
**HC** Honeycomb Grid  
**HO** Hood  
**VS** Visor



**HC**



**HO**



**VS**

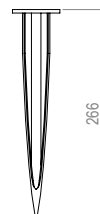
Code	Accessories
------	-------------

**VL-SH1**  
**\*SPK** SPIKE  
**\*1BR** Bracket for 1 projector  
**\*CBLX** Special length cable

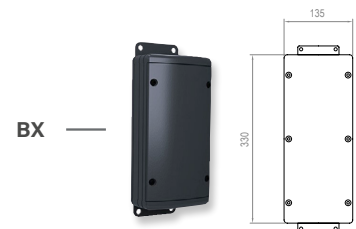
*\* Must be used with Type F*  
*\* Must be used with Type C*  
*\* Instead of X, put length of cable needed*  
*Example: VL-SH1-CBL-10m*



**SPK**



266



**BX**

# Accessories

Code	Description	Diameter	N° of projectors
VL-SH1	RNG RING	50 50cm	2P 2 projectors
		60 60cm	3P 3 projectors
		70 70cm	4P 4 projectors
		80 80cm	6P 6 projectors
			8P 8 projectors
	<i>Suggested diameter = diameter of tree trunk + 10cm/15cm</i>		<i>* projectors references must be order separately</i>
			<i>** For 24Vdc projectors, ring can allocate 1 power supply for all projectors</i>

